



425LM-1 PARTS LIST



GBC IS AN ACCO BRANDS COMPANY

FIGURE 8.1

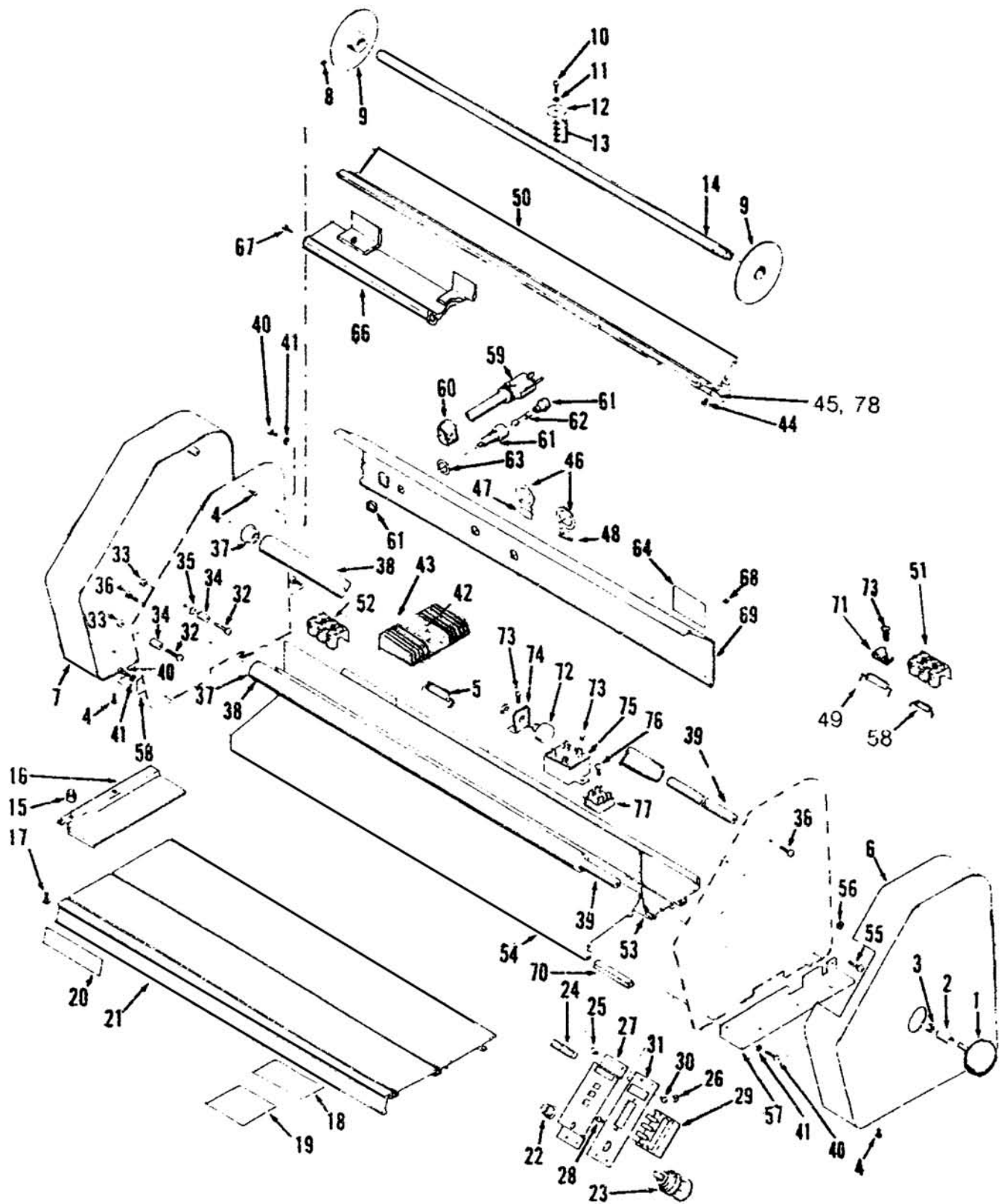
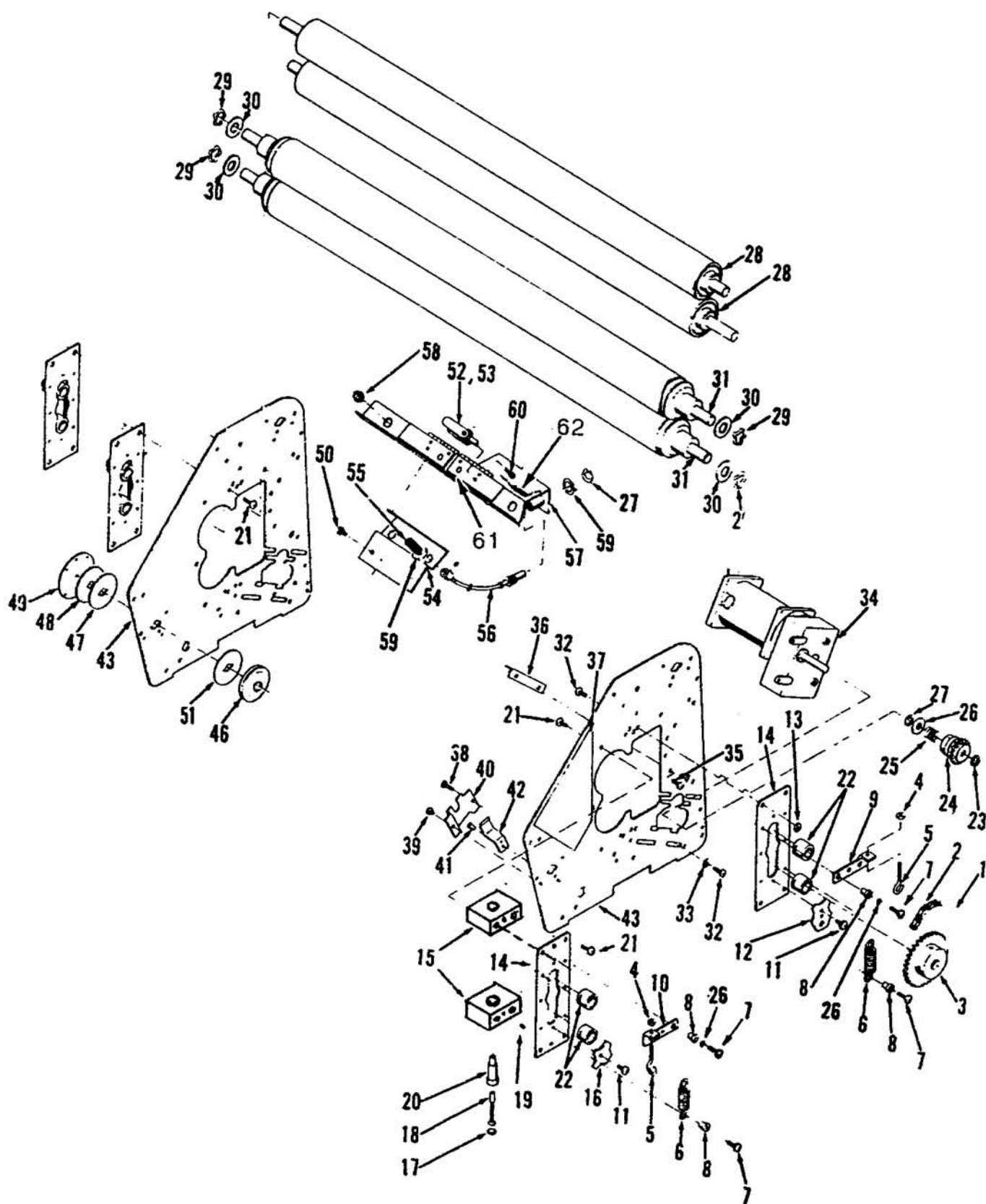


FIGURE 8.1

INDEX #	PART #	DESCRIPTION	QUANTITY
1	1107407	KNOB	1
2	1107408	SLEEVE	1
3	1926604	NUT, 5/16-18	1
4	1911116	8-32 X 3/8" LONG	8
5	1109463	RESISTOR	0
6	1156019	COVER ASSY, RIGHT HAND	1
7	1156020	COVER ASSY, LEFT HAND	1
8	1900004	SCREW, 8-32 X 3/16" LONG	2
9	1131137	DISC ASSY, SUPPLY ROLL	4
10	1902815	SCREW, 6-32 X 1/2" LONG	6
11	1925802	LOCK WASHER #6	6
12	1102346	CLIP, CORE MOUNTING	6
13	1925007	WASHER, #6	24
14	1109341	ROD, ROLL CARRIER (Also Use 1154397)	2
15	1106164	KNOB	2
16	1128642	GUIDE ASSY, SIDE	1
17	1106163	SCREW, KNOB	2
18	1106160	LABEL, THREADING DIAGRAM	1
	1131098	LABEL, NORMAL SPEED SETTING	1
20	1128546	LABEL, LOGO	1
21	1109354	TRAY, FEED TABLE	1
22	1105157	KNOB, SPEED CONTROL	1
23	1131712	SWITCH ASSY.	1
24	1105158	LIGHT, ON READY	1
25	1902803	SCREW, 6-32 X 1/4" LONG	4
26	1926801	NUT, #6-32	4
27	1109324	PANEL, CONTROL	1
28	1907801	SCREW, 6-32 X 3/8	2
29	1108169	SWITCH, CONTROL	1
30	1911105	SCREW, 8-32 X 1/4" LONG	2
31	1105159	BRACKET, PANEL	1
32	1902908	SCREW, 10-32 X 1/2" LONG	4
33	1927202	NUT, FLEX LOCK, 10-32	4
34	1122032	SUPPORT, TABLE	4
35	1150141	O-RING, SPACER, TABLE	2
36	1911103	SCREW, 10-32 X 1/2" LONG	8
37	1108054	BEARING, SHAFT, FILM GUIDE	4
38	1109343	TUBE, FILM GUIDE	2
39	1109342	SHAFT, FILM GUIDE	2
40	1907806	SCREW, 8-32 X 3/4" LONG	18
41	1925806	LOCK WASHER, #8	16
42	1104292	RECTIFIER	1
43	1104279	HEAT SINK	1
44	1911109	SCREW, 6-32 X 1/4" LONG	8
45	1103631	BLADE, TEAR OFF	2

INDEX #	PART#	DESCRIPTION	QUANTITY
46	OBS	THERMOSTAT LABEL	2
47	1122094	LABEL, READY LIGHT	1
48	1122093	LABEL, HEAT	1
49	1818007	CAPACITOR	1
50	1131022	PANEL, CUT-OFF	1
51	1131023	TERMINAL BLOCK	1
52	1128734	BLOCK, TERMINAL	1
53	1131015	PLATE, BASE, REAR	1
54	1109356	PLATE, BASE, FRONT	1
55	1902820	SCREW, 10-32 X 1/2" LONG	2
56	1926803	NUT, 10-32	2
57	1109351	SIDE ANGLE, RIGHT	1
58	1109350	SIDE ANGLE, LEFT	1
58	1818305	DIODE	1
59	1154187	CORD, POWER SUPPLY	1
60	1952417	STRAIN, RELIEF	1
61	1105849	HOLDER, FUSE	1
62	1104289	FUSE, 250V. 15 AMP	1
63	1100550	LABEL, ELECTRICAL IDENTIFICATION	1
64	1128639	CAUTION LABEL	1
65	1109440	MTR TRANSIENT VOLTAGE SUPPRESSOR ASSY	1
66	1131092	FILM HOLD DOWN ASSY	1
67	1907806	SCREW	2
68	1911109	SCREW, 6-32 X 3/8" LONG	5
69	1131017	COVER, REAR	1
70	1107289	FOOT, RUBBER	4
71	1931006	CLAMP, CABLE	1
72	1109451	POTENTIOMETER	1
73	1911115	SCREW, 6-32 X 5/16" LONG	1
74	1109452	ANGLE, POTENTIOMETER MOUNTING	1
75	1131708	SPEED CONTROL, SOLID STATE	1
76	1911110	SCREW, 6-32 X 5/8" LONG	1
77	1105857	RECTIFIER, SILICON	1
78	1128697	PROTECTOR, TEAR-OFF BLADE	1
*	1109303	UTILITY PACK	1
**	1916301	ALLEN WRENCH	1



INDEX #	PART #	DESCRIPTION	QUANTITY
1	1128691	CHAIN DRIVE 25 1/4 PITCH	1
2	1140148	LINK, MASTER	1
3	1109370	SPROKET, DRIVEN	1
4	1926802	NUT, #8-32	4
5	1953801	EYEBOLT	4
6	1102275	SPRING, BEARING BRACKET	4
7	1902820	SCREW, #10-32 X 1/2" LONG	8
8	1932401	PERMA -NUT, #10-32	8
9	1102276	LEVER, RIGHT HAND	2
10	1102277	LEVER, LEFT HAND	2
11	1911123	SCREW, #10-32 X 1/4" LONG	4
12	1122011	PLATE, GAP ADJUSTMENT, PULL ROLLER	2
13	1926803	NUT, #10-32	6
14	1128754	BEARING PLATE	4
15	1128755	SPACER BEARING PLATE	4
16	1122010	ADJUSTING PLATE, RESISTOR ROLL	2
17	1102234	CAP, BRUSH HOLDER	4
18	1102231	BRUSH AND SPRING ASSY.	4
19	1900008	SCREW, #6-32 X 1/8"	4
20	1102232	HOLDER, BRUSH	4
21	1991102	SCREW, 10-32 X 3/8" LONG	16
22	1102218	BEARING, BRONZE	4
23	1931606	RING, GRIP	1
24	1106167	CLUTCH ASSY.	1
25	1100107	SPRING	1
26	1925005	WASHER, FLAT	4
27	1931602	GRIP RING	2
28	1109337	PULL ROLLER ASSY.	2
29	1926504	WASHER, SPRING, WAVY, 1/2" I.D.	4
30	1104287	WASHER, NON METALLIC	4
31	1109330	HEAT ROLLER ASSY.	2
32	1911103	SCREW, 10-32 X 1/2" LONG	6
33	1925002	WASHER, FLAT #10	3
34	1154067	MOTOR ASSY.	1
35	1911115	SCREW, 6-32 X 5/8" LONG	1
36	1109352	BRACKET, COVER REAR	2
37	1104295	INSULATOR	1
38	1911118	SCREW, 8-32 X 5/8 LONG	1
39	1911105	SCREW, 8-32 X 1/4" LONG	5
40	6210021	BRACKET, ROD ROLL CARRIER	2
41	1929703	RIVET, OVAL HEAD, SEMI-TUBULAR, 1/8"	4
42	1102288	SPRING, SHAFT	2
43	1156015	PLATE, SIDE	2
46	6160010	COMPLETE BRAKE ASSY.	2
47	1102181	DISC BRAKE FRICTION	4
48	1102187	DISC, BRAKE	2
49	1122009	DISC, ASSY, ADJUSTMENT, FILM TENSION	2

INDEX #	PART #	DESCRIPTION	QUANTITY
50	1911103	SCREW, 10-32 X 5/8" LONG	2
51	1104261	LINER, BRAKE	4
52	1131744	THERMOSTAT, HEAT	1
53	1122041	THERMOSTAT, READY LIGHT	1
54	1131714	THERMOSTAT, BRACKET	1
55	1122056	SPRING	2
56	1131713	THERMOSTAT, FLEXIBLE SHAFT	2
57	1131099	GUIDE, FLEXIBLE SHAFT	1
58	1114038	BUSHING	2
59	1925125	WASHER, FLAT	4
60	1911118	SCREW 8-32 X 5/8" LONG	2
61	1131027	THERMOSTAT BRACKET ASSY. COMPLETE	1
62	1818606	THERMAL CUT-OUT	1