



# COOL TOUCH Parts List



GBC IS AN ACCO BRANDS COMPANY

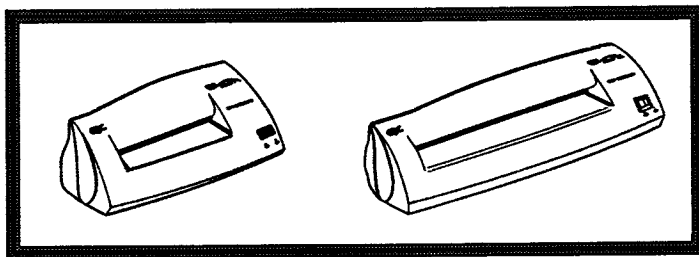
---

# PARTS MANUAL

---



**COOL** *touch™*  
**COLD LAMINATOR**



**GBC.** General Binding Corporation  
Northbrook, IL 60062-4195

## FINAL ASSEMBLY PART NUMBERS

	<u>Cool Touch 5</u>	<u>Cool Touch 10</u>
North America 115V	1710601	1710671
Japan	1710611	1710681
Euro	1710621	1710691
U.K.	1710631	1710701
Australia	1710641	1710711

## **SPECIFICATIONS**

### **Machine Dimensions:**

Cool Touch 5	10" (254mm) W x 4" (100mm) D x 3.25" (82.5mm) H
Cool Touch 10	14.5" (368mm) W x 4" (100mm) D x 3.25" (82.5mm) H

	<b><u>Cool Touch 5</u></b>	<b><u>Cool Touch 10</u></b>
<b>Machine Weight:</b>	2.3 lb. (1.04kg)	3.2lb. (1.45kg.)

<b>Speed:</b>	10.5" / Min.	10.5" / Min.
---------------	--------------	--------------

<b>Capacity Width:</b>	5" (127mm)	10" (254mm)
------------------------	------------	-------------

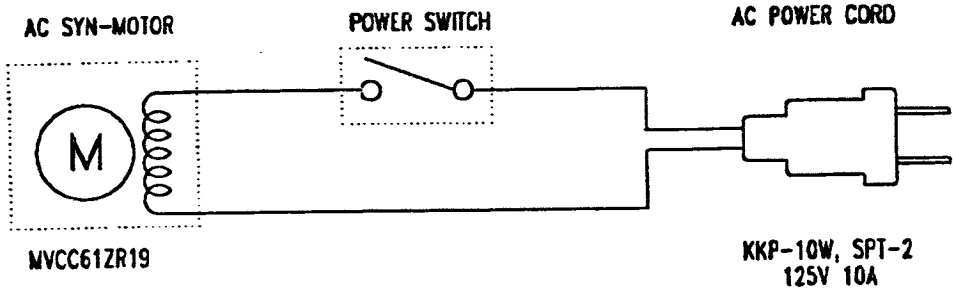
<b>Capacity Thickness:</b>	.080" (2mm)	.080" (2mm)
----------------------------	-------------	-------------

### **Electrical Specifications:**

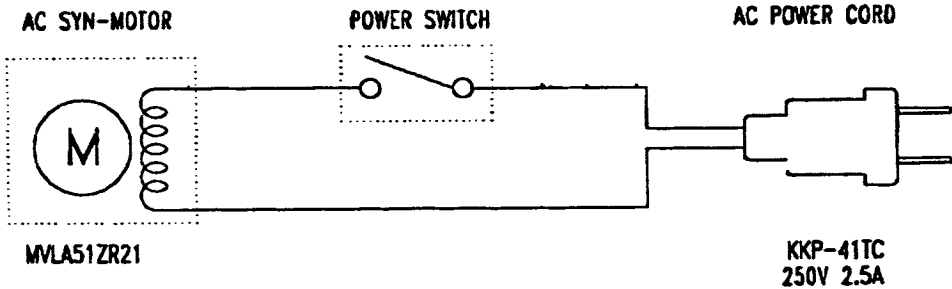
Volts / Hz	120V 60Hz (230V 50Hz)	120V 60Hz (230V 50Hz)
Amperage	33mA (17mA)	33mA (17mA)
Watts	3watts	3watts

**SCHEMATIC DIAGRAM**

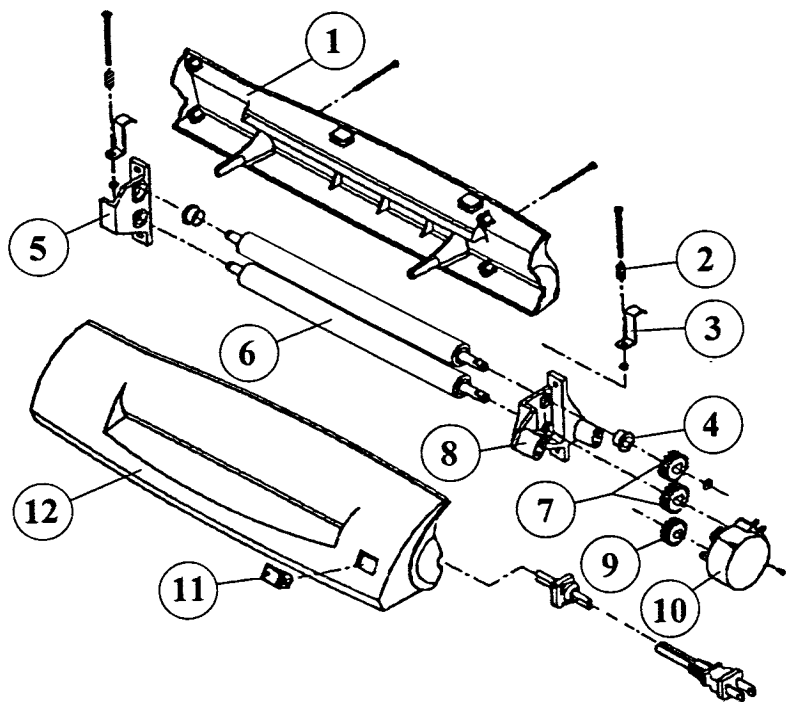
**120VAC 60 Hz**



**230VAC 50 Hz**



COOL TOUCH 5 & COOL TOUCH 10



**PARTS LIST***Cool Touch 5 (140 C) & Cool Touch 10 (250 C)*

ITEM	P/N	DESCRIPTION	QTY
1	1700980	REAR HOUSING (140 C)	1
1	1700981	REAR HOUSING (250 C)	1
2	1700982	PRESSURE SPRING	2
3	1700983	ROLLER PUSH PLATE	2
4	1700984	BEARING	2
5	1700985	LEFT FRAME	1
6	1700986	ROLLER (140 C)	2
6	1700987	ROLLER (250 C)	2
7	1700988	RIGHT FRAME	1
8	1700989	PLASTIC GEAR 21T	2
9	1700990	PLASTIC GEAR 14T	1
10	1700991	MOTOR (120V)	1
10	1700979	MOTOR (240V)	1
11	1700992	POWER SWITCH	1
12	1700993	FRONT CASE (140 C)	1
12	1700994	FRONT CASE (250 C)	1
13	1700995	RETAIL BOX (140 C)	.25
13	1700996	RETAIL BOX (250 C)	.25
14	1700997	MASTER BOX (140 C)	1
14	1700998	MASTER BOX (250 C)	1
15	1700999	OPERATING INSTRUCTIONS	1