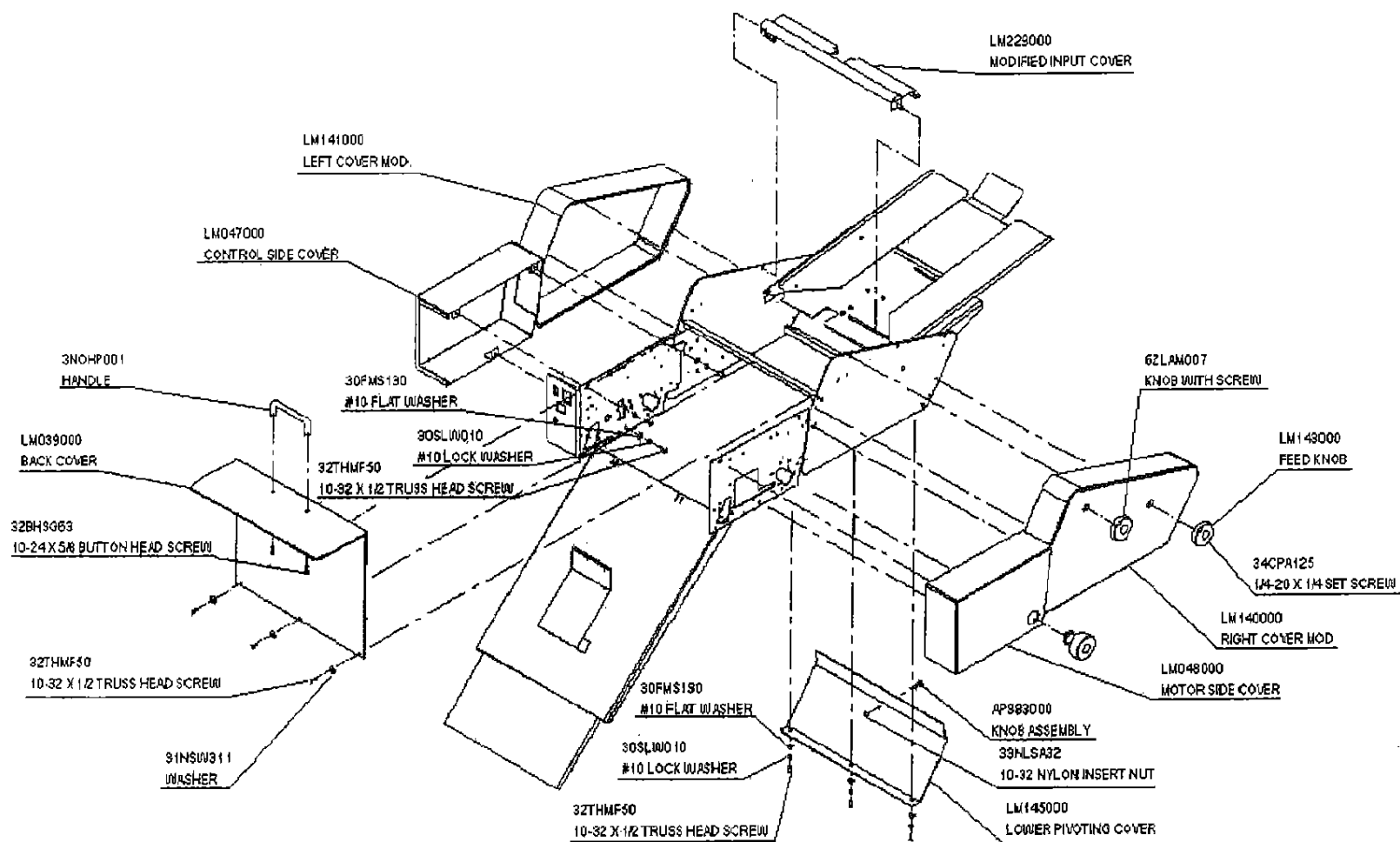




# EOS 35 PARTS LIST



GBC IS AN ACCO BRANDS COMPANY



32FHSF63  
10-32 X 5/8 FLAT HEAD SOCKET SCREW

LM240000  
FEED ROLLER WITH HUB

LM108000  
BEARING BLOCK

61R10815  
BEARING

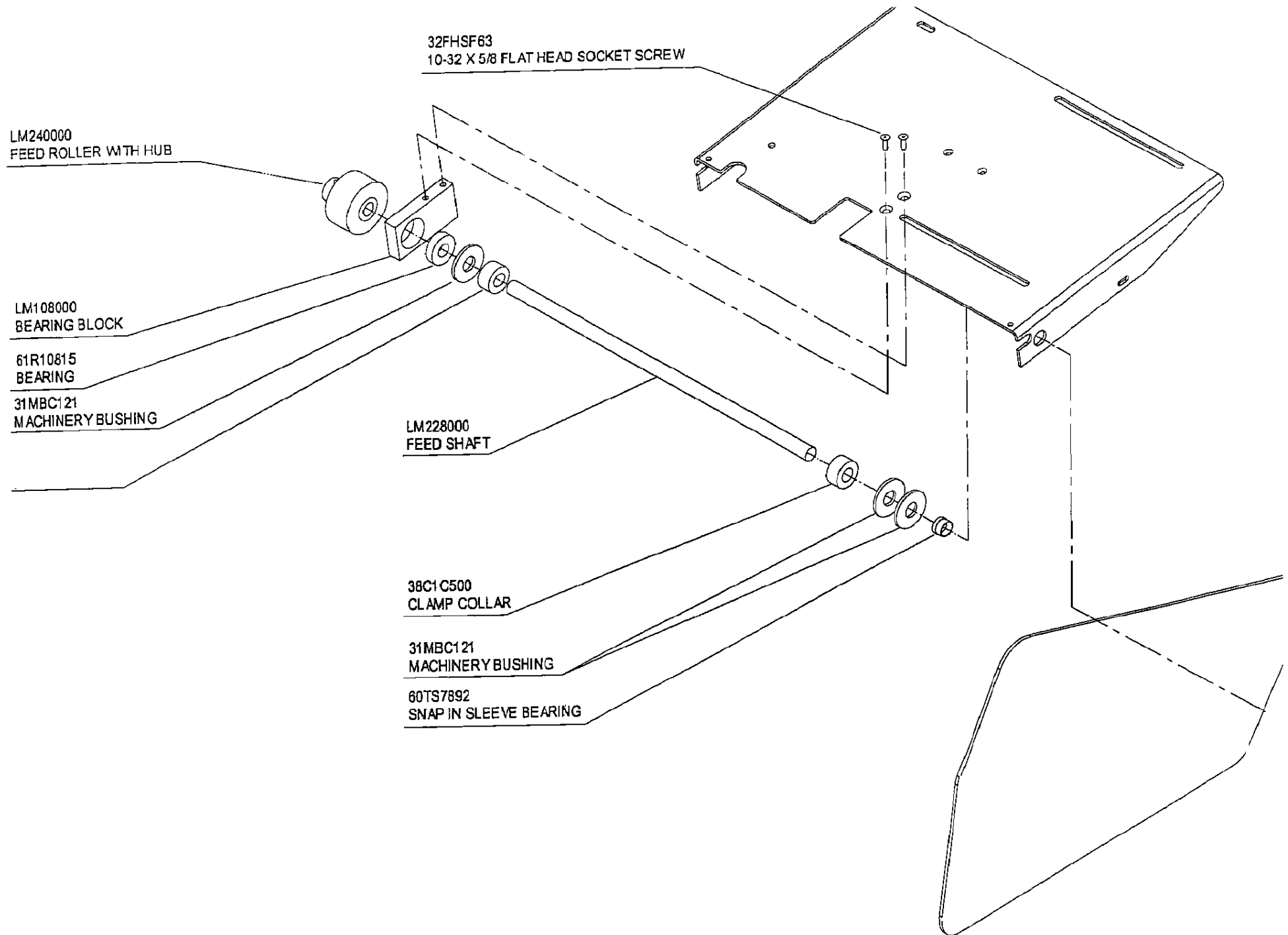
31MBC121  
MACHINERY BUSHING

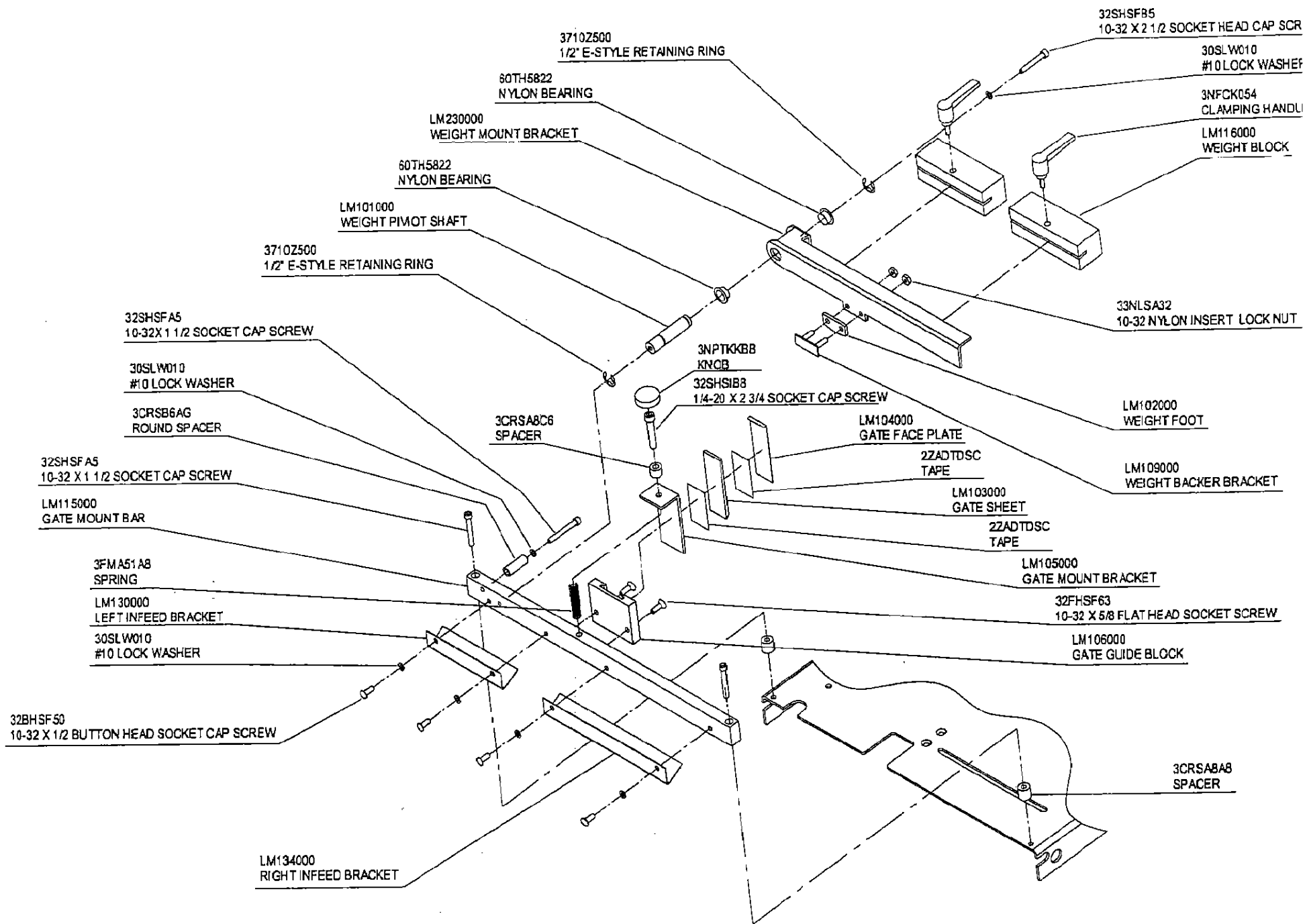
LM228000  
FEED SHAFT

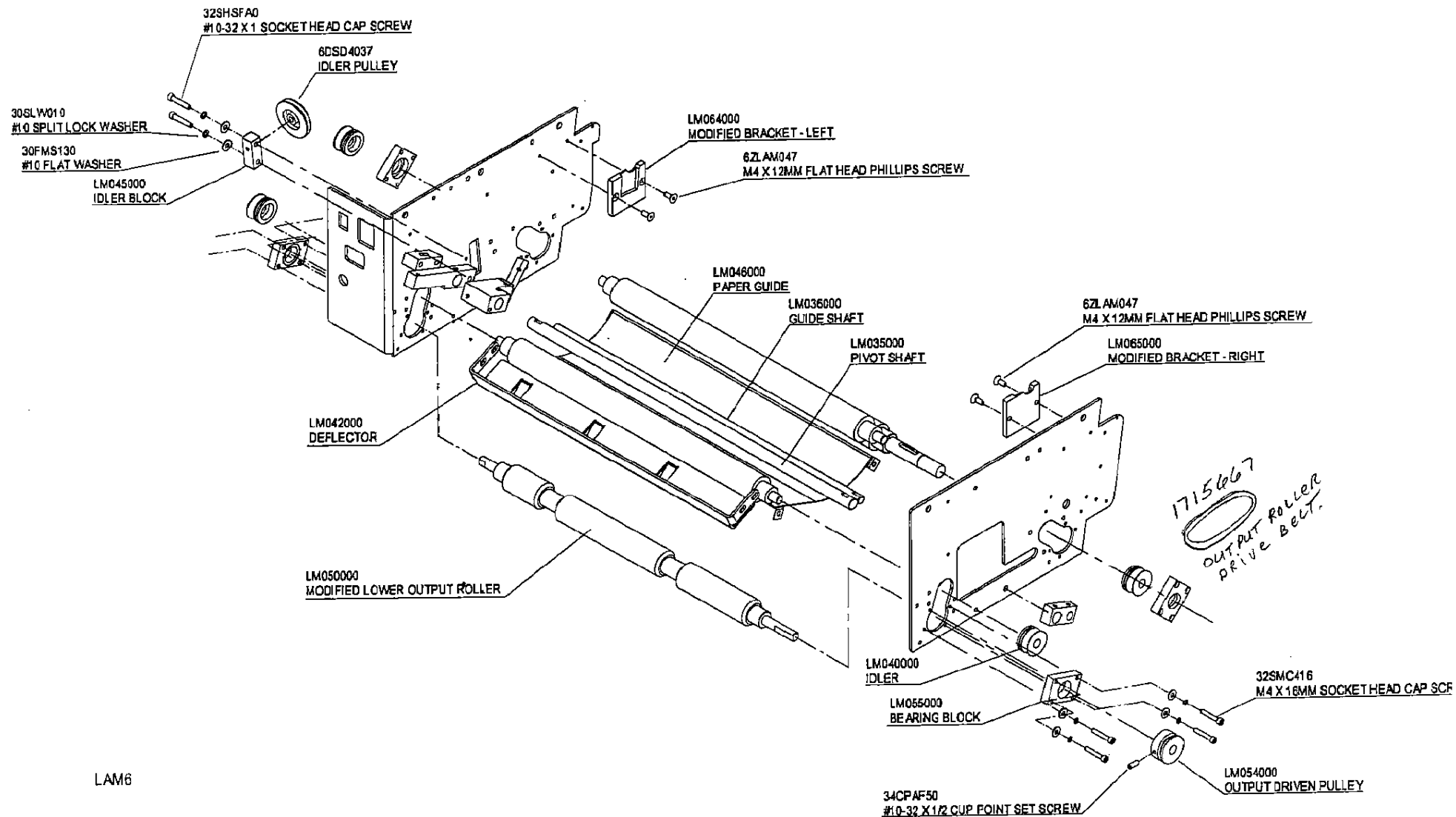
38C1 C500  
CLAMP COLLAR

31MBC121  
MACHINERY BUSHING

60TS7892  
SNAP IN SLEEVE BEARING

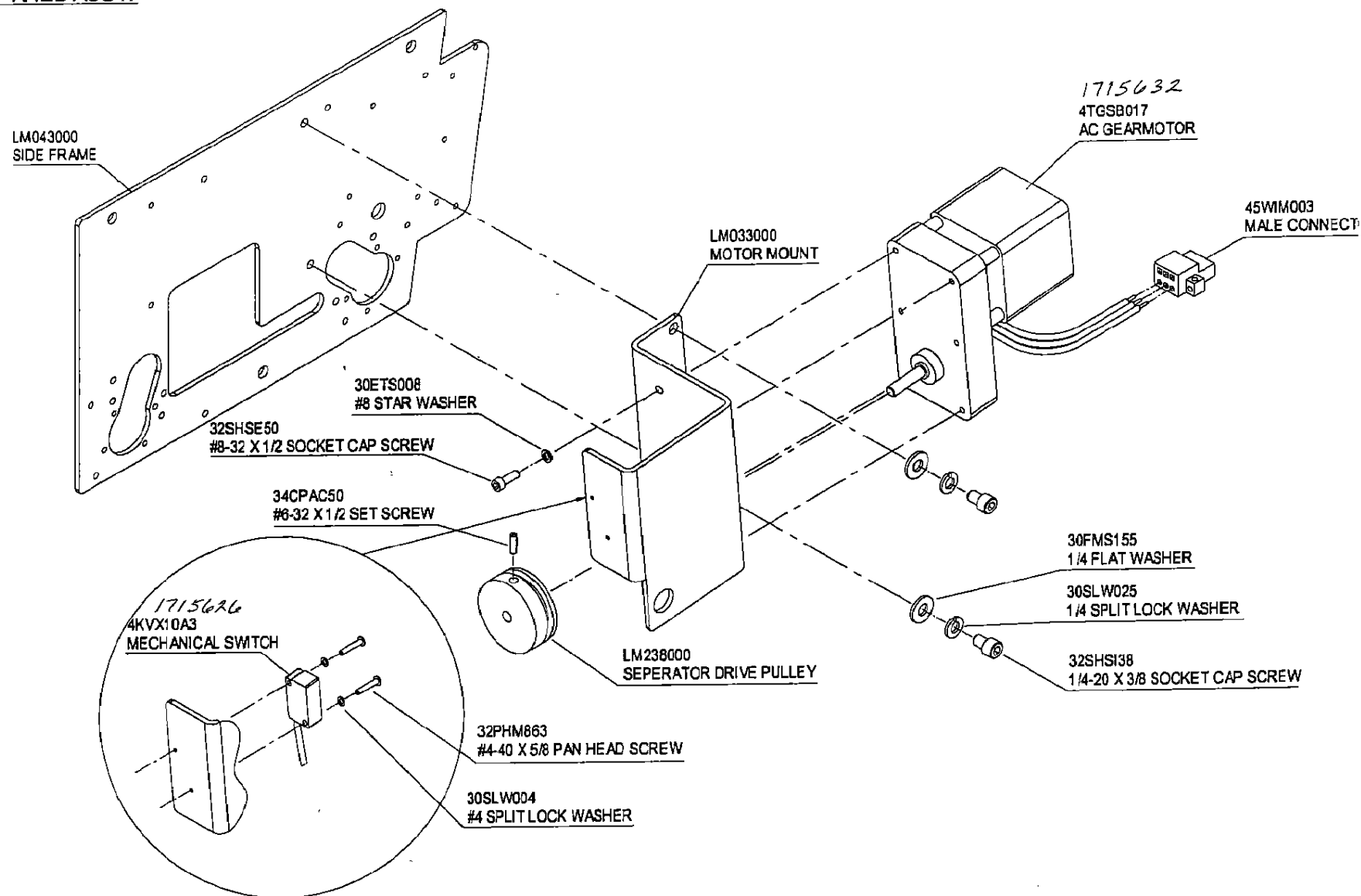




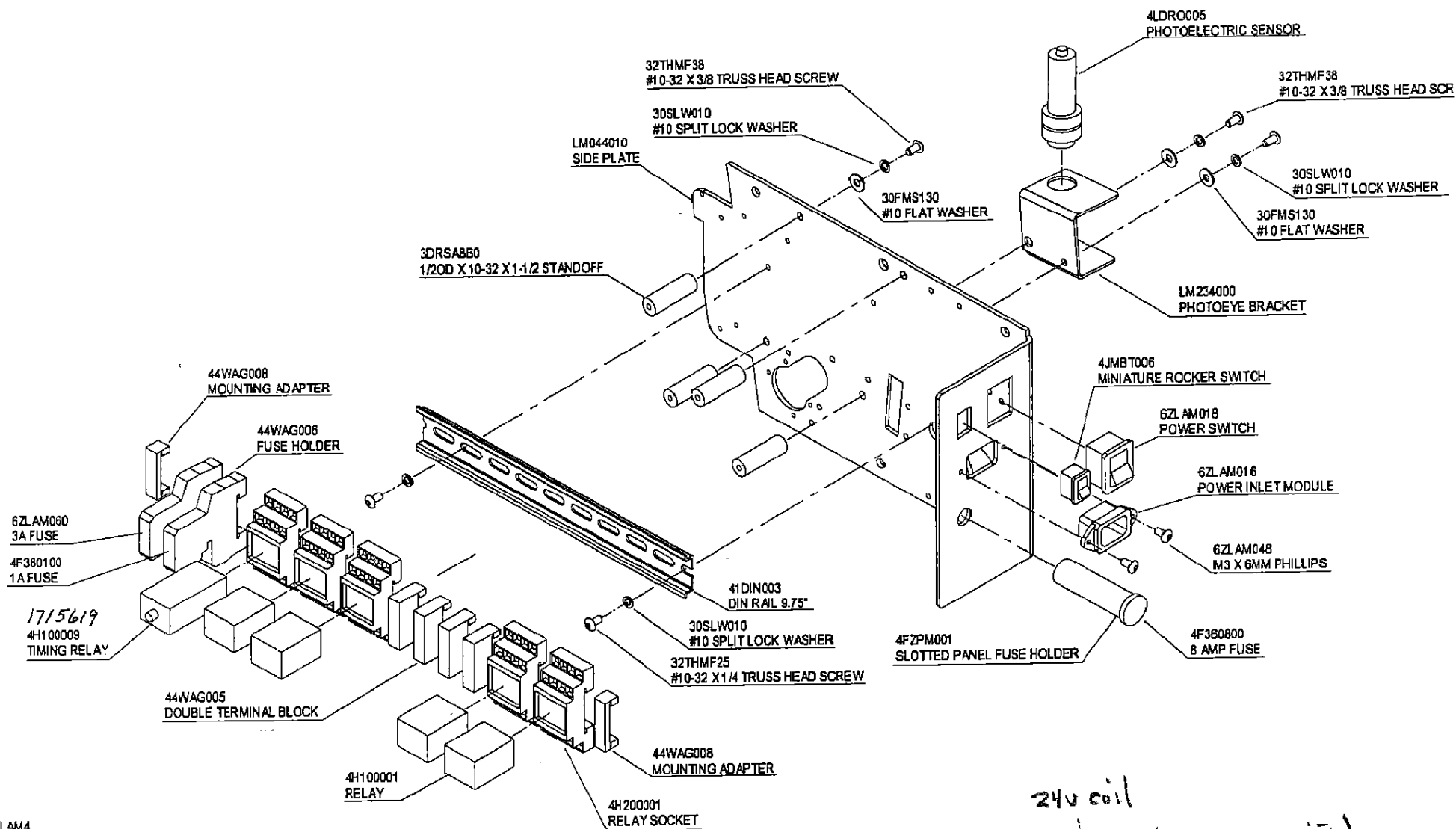


LAM6

MOTOR SIDE PANEL ASSY.

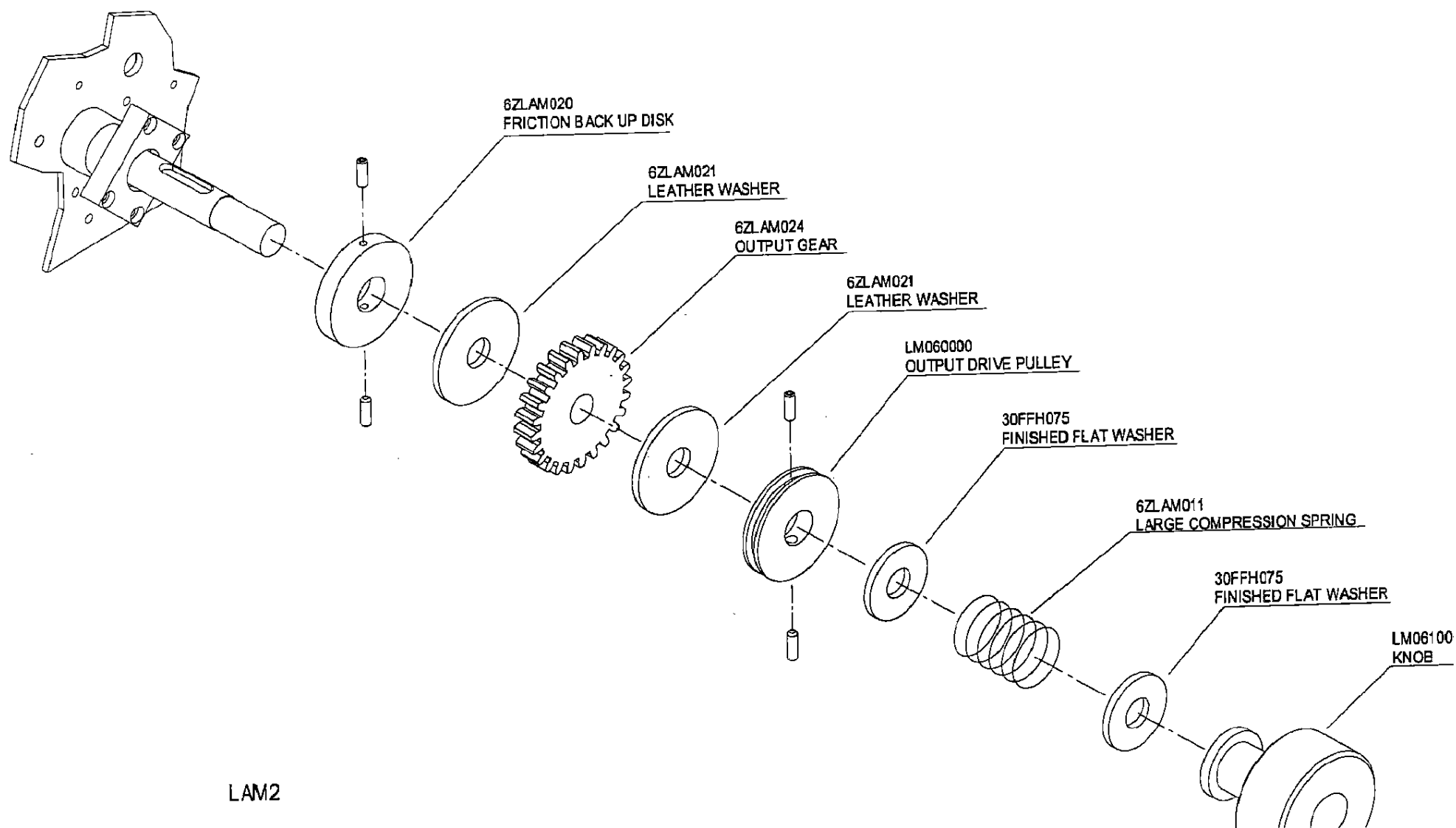


# OPERATOR SIDE PANEL ASSY.



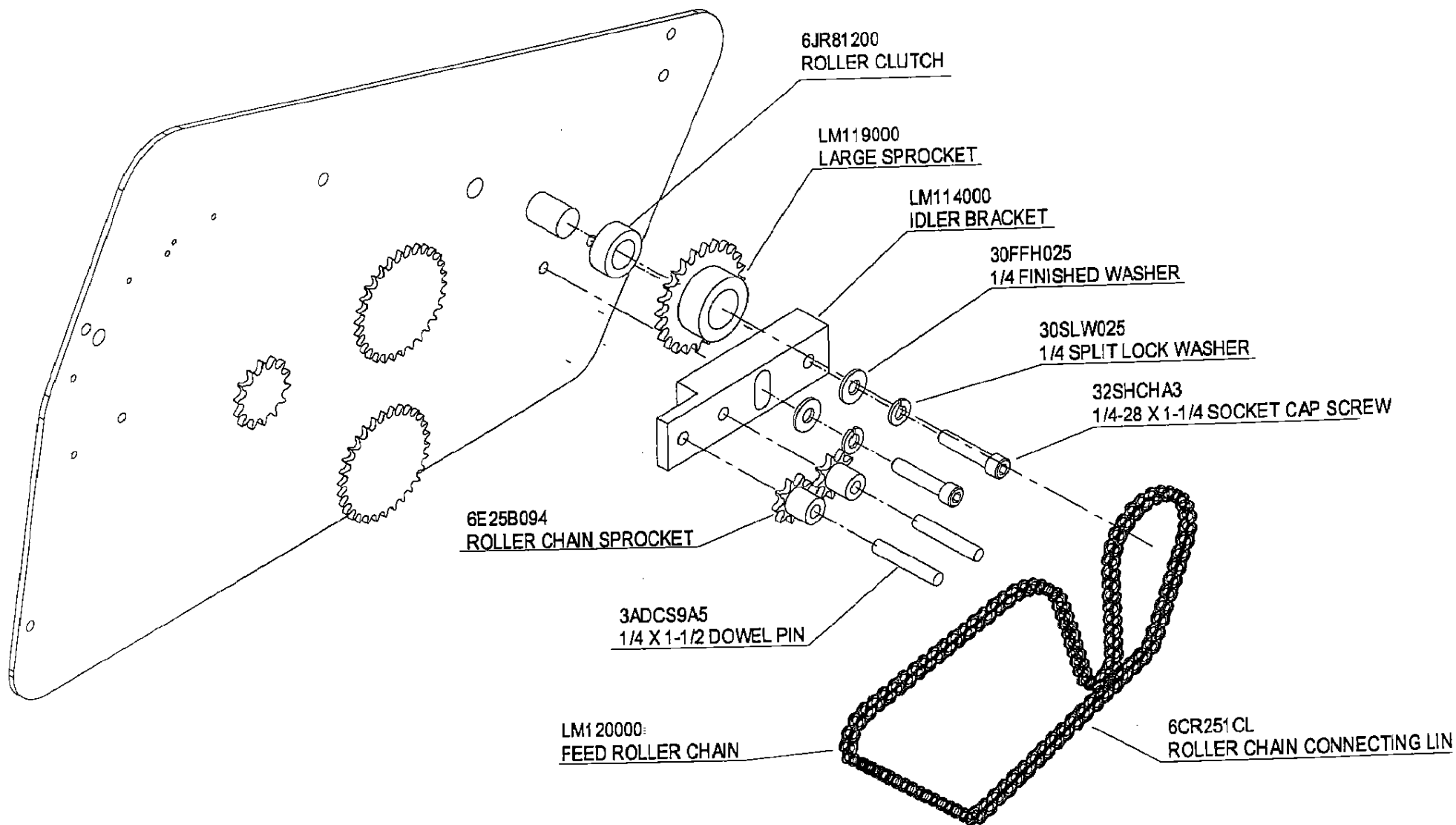
LAM4

24v coil  
2 pole relay (newer unit)  
1715621 - 48100011

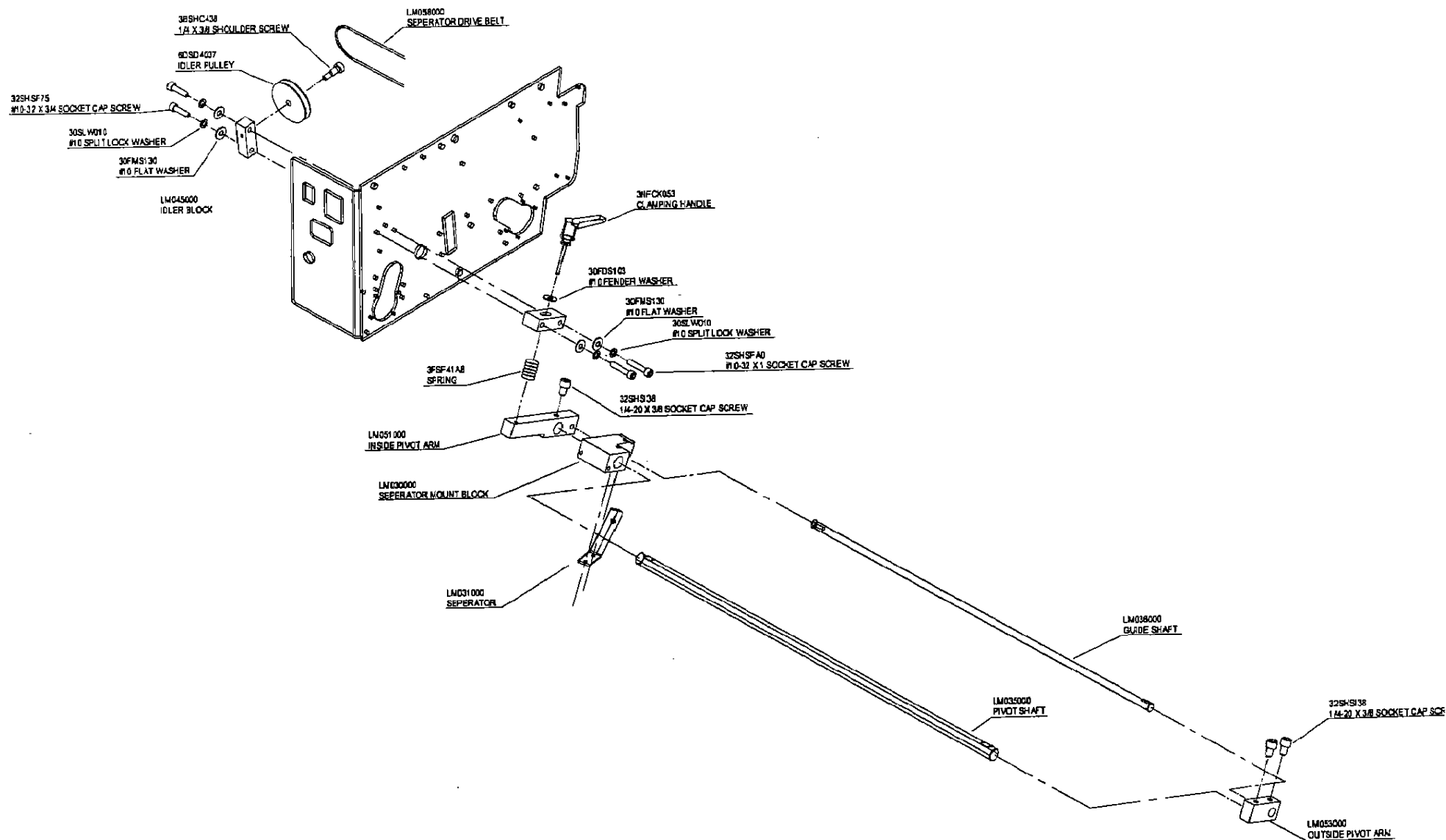


LAM2





GBC  
#  
171566



ECN DATE	ACT	GBC PT. #	VDR PT. #	DESCRIPTION
				<b>CABLE TOS BOIN</b>
		1715450	601230851	ROLLER COVER HOLD BAR
		1715451	601230808	ROLLER COVER SUPPORT (LEFT)
		1715452	601230809	ROLLER COVER SUPPORT (RIGHT)
		1715453	603030621	OPENING LEVER FOR ROLLER COVER (UPPER)
		1715454	603030622	OPENING LEVER FOR ROLLER COVER (LOWER)
		1715455	603030525	PAPER GUIDE FIXING BOLT
		1715456	603030111	TIE BAR
		1715457	703010211	CABLE PROTECTOR
		1715458	701090153	COIL SPRING
		1715459	701090156	COIL SPRING
		1715460	601230221	Left side plate for SS
		1715461	601230222	Right side plate for SS
		1715462	601230311	Left side case for SS
		1715463	601230312	Right side case for SS
		1715464	601230813	Idle gear holder for SS
		1715465	601230849	Decurling bar support (Left)
		1715466	601230850	Decurling bar support (Right)
		1715467	603010905	Front bearing housing for SS
		1715468	603010906	Rear bearing housing for SS
		1715469	603030113	Tie bar for SS
		1715470	603030143	Decurling bar
		1715471	603030522	Tension handle for SS
		1715472	603030523	Tension plate for SS
		1715473	607040531	Teflon heat roller
		1715474	607040543	Front feeding roller
		1715475	607040544	Rear feeding roller
		1715476	701010104	Ball bearing
		1715477	701010105	Ball bearing
		1715478	701050224	Du bearing
		1715479	701080303	Motor gear for SS
		1715480	701080304	Idle gear for SS
		1715481	701090141	Tension spring for SS
		1715482	701090101	Coil spring for roller pressure
		1715483	701080117	Rubbing spur gear
		1715484	701070136	Roller chain
		1715485	704031012	Power cord

1712156 CONTROL BOARD

ECN DATE	ACT	GBC PT #	VDR PT #	DESCRIPTION
		1715486	2xabp32r	AIR-BUBBLE PACKAGING ROLL 5/16" BUBBLE HT
		1715487	2XBPL053	ZIP-PRESS BAG POLYETHYLENE 2.000 MIL X 3.000 X 5.000
		1715488	2XCPP001	STRAPPING EDGE PROTECTORS. 2 1/2 X 1 3/4 X 1 3/4, BLACK PLASTIC
		1715489	2XSTC050	STRAPPING CLIPS FOR WOVEN POLYESTER STRAPPING 1/2 X .022 X 3900
		1715490	2XSTP050	STRAPPING, WOVEN POLYESTER, 1/2" X 0.022" X 3900'
		1715491	2ZADTDSC	DOUBLE SIDED CLOTH TAPE 1" WIDE
		1715492	2ZADTUM8	UHMW POLYETHYLENE TAPE ACRYLIC ADHESIVE 0.008" X 1.000"
		1715493	30ETS008	EXTERNAL TOOTH LOCK WASHER 410 STAINLESS #8, 0.176ID X 0.381OD X 0.018THK
		1715494	30FDS103	FENDER WASHER 18-8 STAINLESS #10, 13/64ID X 11/16OD X 0.050THK
		1715495	30FFH010	FINISHED FLAT WASHER STEEL, CASE-HARDENED, THICK #10, 13/64ID X 1/2OD X 3/32 THK
		1715496	30FFH025	FINISHED FLAT WASHER STEEL, CASE-HARDENED, THICK 1/4, 9/32ID X 5/8OD X 1/8THK
		1715497	30FFH063	FINISHED FLAT WASHER, STEEL, CASE-HARDENED, THICK, 5/8, 21/32 ID X 1-3/8 OD X 1/8 THK
		1715498	30FMS110	FLAT WASHER MS 15795 MIL, STAINLESS #4, 0.125ID X 0.312OD X 0.040THK
		1715499	30FMS116	FLAT WASHER MS 15795 MIL, STAINLESS #8, 0.156ID X 0.375OD X 0.065THK
		1715500	30FMS125	FLAT WASHER MS 15795 MIL, STAINLESS #8, 0.188ID X 0.375OD X 0.065THK
		1715501	30FMS130	FLAT WASHER MS 15795 MIL, STAINLESS #10, 0.219ID X 0.438OD X 0.065THK
		1715502	30FMS155	FLAT WASHER MS 15795 MIL, STAINLESS 1/4, 0.281ID X 0.625OD X 0.080THK
		1715503	30FMS185	FLAT WASHER MS 15795 MIL, STAINLESS 5/16, 0.344ID X 0.688OD X 0.080THK
		1715504	30SLW004	SPRING LOCK WASHER REGULAR, 18-8 STAINLESS #4
		1715505	30SLW008	SPRING LOCK WASHER REGULAR, 18-8 STAINLESS #8
		1715506	30SLW010	SPRING LOCK WASHER REGULAR, 18-8 STAINLESS #10
		1715507	30SLW025	SPRING LOCK WASHER REGULAR, 18-8 STAINLESS 1/4"
		1715508	30SLW031	SPRING LOCK WASHER REGULAR, 18-8 STAINLESS 5/16"
		1715509	31MBC121	MACHINERY BUSHING LOW-CARBON MILD STEEL 1/2ID X 7/8OD X 0.075THK
		1715510	31NSW311	NEOPRENE SEALING WASHER STAINLESS/NEOPRENE 200 ID X 5/8 OD
		1715511	31NYF120	NYLON FLAT WASHER, REGULAR NATURAL COLOR #10, 0.195ID X 0.437OD X 0.031THK
		1715512	32BHSF50	BUTTON HEAD SOCKET CAP SCREW 18-8 STAINLESS #10-32 X 1/2
		1715513	32BHSF63	BUTTON HEAD SOCKET CAP SCREW 18-8 SS #10-24 X 5/8
		1715514	32FHSC50	FLAT HEAD SOCKET CAP SCREW 18-8 STAINLESS #6-32 X 1/2
		1715515	32FHSC63	FLAT HEAD SOCKET CAP SCREW 18-8 STAINLESS #10-32 X 5/8
		1715516	32HMF31	HEX HEAD MACHINE SCREW 18-8 STAINLESS #10-32 X 1 1/4
		1715517	32SHCA3	SOCKET CAP SCREW ALLOY STEEL BLACK FINISH 1/4-28 X 1 1/4
		1715518	32SHS838	SOCKET CAP SCREW 18-8 STAINLESS #4-40 X 3/8
		1715519	32SHS863	SOCKET CAP SCREW 18-8 STAINLESS #4-40 X 5/8
		1715520	32SHS8A3	SOCKET CAP SCREW 18-8 STAINLESS #4-40 X 1-1/4
		1715521	32SHSE38	SOCKET CAP SCREW 18-8 STAINLESS #8-32 X 3/8
		1715522	32SHSE50	SOCKET CAP SCREW 18-8 STAINLESS #8-32 X 1/2
		1715523	32SHSF31	SOCKET CAP SCREW 18-8 STAINLESS #10-32 X 5/16

ECN DATE	ACT	GBC PT. #	VDR PT. #	DESCRIPTION
		1715524	32SHSF38	SOCKET CAP SCREW 18-8 STAINLESS #10-32 X 3/8
		1715525	32SHSF50	SOCKET CAP SCREW 18-8 STAINLESS #10-32 X 1/2
		1715526	32SHSF63	SOCKET CAP SCREW 18-8 STAINLESS #10-32 X 5/8
		1715527	32SHSF75	SOCKET CAP SCREW 18-8 STAINLESS #10-32 X 3/4
		1715528	32SHSFA0	SOCKET CAP SCREW 18-8 STAINLESS #10-32 X 1
		1715529	32SHSFA5	SOCKET CAP SCREW 18-8 STAINLESS #10-32 X 1-1/2
		1715530	32SHSFA8	SOCKET CAP SCREW 18-8 STAINLESS #10-32 X 1 3/4
		1715531	32SHSFB5	SOCKET CAP SCREW 18-8 STAINLESS #10-32 X 2-1/2
		1715532	32SHSI38	SOCKET CAP SCREW 18-8 STAINLESS #1/4-20 X 3/8
		1715533	32SHSI50	SOCKET CAP SCREW 18-8 STAINLESS #1/4-20 X 1/2
		1715534	32SHSIB8	SOCKET CAP SCREW 18-8 STAINLESS #1/4-20 X 2 3/4
		1715535	32SMC416	SCREW, SOCKET HEAD CAP, METRIC, M4 X 16 MM
		1715536	32THMF25	TRUSS HEAD PHILLIPS MACHINE SCREW 18-8 STAINLESS #10-32 X 1/4
		1715537	32THMF38	TRUSS HEAD PHILLIPS MACHINE SCREW 18-8 STAINLESS #10-32 X 3/8
		1715538	32THMF50	TRUSS HEAD PHILLIPS MACHINE SCREW 18-8 STAINLESS #10-32 X 1/2
		1715539	32THMF75	TRUSS HEAD PHILLIPS MACHINE SCREW 18-8 STAINLESS #10-32 X 3/4
		1715540	32THMFA0	TRUSS HEAD PHILLIPS MACHINE SCREW 18-8 STAINLESS #10-32 X 1
		1715541	33HXS32	HEX NUT 18-8 STAINLESS #10-32
		1715542	33NLS632	NYLON INSERT HEX LOCK NUT 18-8 STAINLESS #6-32
		1715543	33NLSA32	NYLON INSERT HEX LOCK NUT 18-8 STAINLESS #10-32
		1715544	33WNCA32	WING NUT, #10-32 ZINC PLATED STEEL
		1715545	34CPAF19	CUP POINT SOCKET SET SCREW ALLOY STEEL, BLACK FINISH #10-32 X 3/16
		1715546	34CPAF50	CUP POINT SOCKET SET SCREW ALLOY STEEL, BLACK FINISH #10-32 X 1/2
		1715547	34SPBI25	BRASS TIPPED SOCKET SET SCREW ALLOY STEEL, BLACK FINISH 1/4-20 X 1/4, 1/16TIP LGT
		1715548	35DWS6A6	BUGLE HEAD PHILLIPS DRYWALL SCREW STANDARD #6 X 1-5/8
		1715549	3710Z500	E-STYLE RETAINING RING SPRING STEEL, ZINC PLATED 1/2 SHAFT
		1715550	38C1C500	ONE-PIECE CLAMP STYLE COLLAR STEEL, BLACK FINISH 1/2ID X 1-1/8OD X 13/32W
		1715551	3ADCS9A5	DOWEL PIN ALLOY STEEL, HARDENED AND GROUND 1/4 X 1-1/2
		1715552	3ADCSAA0	DOWEL PIN, ALLOY STEEL, HARDENED AND GROUND 5/16 X 1
		1715553	3BSHC438	SHOULDER SCREW ALLOY STEEL, HEAT TREATED, BLACK FINISH 1/4 X 3/8
		1715554	3CRSA8A8	ROUND SPACER ALUMINUM 1/2OD X #10ID X 1/2L
		1715555	3CRSA8C6	ROUND SPACER ALUMINUM 1/2OD X 1/4ID X 3/8L
		1715556	3CRSA8CC	ROUND SPACER ALUMINUM 1/2OD X 1/4ID X 3/4L
		1715557	3CRSB448	ROUND SPACER ZINC PLATED BRASS 1/4OD X #4 X 1/2L
		1715558	3CRSB6AG	ROUND SPACER ZINC PLATED BRASS 3/8OD X #10ID X 1L
		1715559	3CRSS8AH	ROUND SPACER STAINLESS 1/2OD X #10ID X 1-1/16
		1715560	3DHSC48C	HEX STANDOFF STEEL 1/4HEX X #8-32 X 3/4L
		1715561	3DRSA8BO	ROUND STANDOFF ALUMINUM 1/2OD X #10-32 X 1-1/2L

ECN DATE	ACT	GBC PT. #	VDR PT. #	DESCRIPTION
		1715562	3FMA51A8	COMPRESSION SPRING, MUSIC WIRE, 0.360 OD X 0.051 WIRE X 1.75 L
		1715563	3FSF41A8	COMPRESSION SPRING, MUSIC WIRE, PLATED, 0.540D X 0.041W X 1.75L
		1715584	3GMC43A8	EXTENSION SPRING, MUSIC WIRE, 0.313 OD X 0.043 WD X 1.750
		1715565	3NFCK053	CLAMPING HANDLE, #10-32 X 1.26 STUD
		1715566	3NFCK054	CLAMPING HANDLE, 1/4-20 BLACK
		1715567	3NMCT003	MAGNETIC LATCH, PULL-TO-OPEN
		1715568	3NOHP001	OVAL HANDLE PULL, BLACK NYLON, 2X #10-24 ON 4.0 CENTER
		1715569	3NPTKKBB	KNURLED PRESS ON THUMB KNOB, BLACK PLASTIC, 1/4 SCREW 1.0 OD X 5/16 H
		1715570	3VGBC068	LAMINATOR POWER INPUT LABEL, 50 HZ
		1715571	3VGBC069	WARNING LAMP LABEL
		1715572	3VGBC072	LAMINATOR POWER INPUT LABEL, 60 HZ
		1715573	3ZGSS011	FIXED FORCE GAS SPRING, 20 LB, 2.36 STROKE
		1715574	3ZGSS071	METAL BALL SOCKET END FITTING FOR M6 MALE THREAD 10MM BALL
		1715575	3ZGSS073	BALL STUD FOR GAS SPRING 10MM BALL, 5/16-18 STUD
		1715576	3ZGSS077	SAFETY CLIP FOR GAS SPRING END FITTING
		1715577	401HSC1B	STRANDED HOOK-UP WIRE BLACK PVC INSULATION 20 AWG
		1715578	401HSC1R	STRANDED HOOK-UP WIRE RED PVC INSULATION 20 AWG
		1715579	401HSC1W	STRANDED HOOK-UP WIRE WHITE PVC INSULATION 20 AWG
		1715580	401HSD1B	STRANDED HOOK-UP WIRE BLACK PVC INSULATION 18 AWG
		1715581	401HSD1R	STRANDED HOOK-UP WIRE RED PVC INSULATION 18 AWG
		1715582	401HSD1W	STRANDED HOOK-UP WIRE WHITE PVC INSULATION 18 AWG
		1715583	401HSE1D	STRANDED HOOK-UP WIRE GREEN/YELLOW PVC INSULATION 16 AWG
		1715584	401HSE1L	STRANDED HOOK-UP WIRE BLUE PVC INSULATION 16 AWG
		1715585	401HSE1N	STRANDED HOOK-UP WIRE BROWN PVC INSULATION 16 AWG
		1715586	40HRNVXS	SWITCH HARNESS 22AWG W/AMP CONNECTOR
		1715587	41DIN003	DIN MOUNTING RAIL ZINC-PLATED STEEL DIN3, 35MM
		1715588	42GMT012	GROMMET, BLACK BUNA-N RUBBER, 3/16 ID X 1/8 G X 1/4 H X 7/16 OD X 5/16 GD
		1715589	42NLCB19	LOOP CLAMP BLACK NYLON 3/16
		1715590	42NLCB25	LOOP CLAMP BLACK NYLON 1/4
		1715591	42NLCB50	LOOP CLAMP BLACK NYLON 1/2
		1715592	42SPV125	THIN WALL SHRINK TUBING PVC 1/8
		1715593	42SPV250	THIN WALL SHRINK TUBING PVC, BLACK 1/4
		1715594	42TIE004	CABLE TIE NATURAL NYLON 0.1 X 4
		1715595	44WAG002	TERMINAL BLOCK END PLATE GREY THERMOSET 2 CONDUCTOR
		1715596	44WAG003	COMB-TYPE TERMINAL BLOCK JUMPER BAR GREY THERMOSET 2 CONDUCTOR
		1715597	44WAG005	DOUBLE TERMINAL BLOCK GREY THERMOSET 4 CONDUCTOR
		1715598	44WAG008	MOUNTING ADAPTER GREY
		1715599	44WAG011	FUSE HOLDER, GREY, 1/4 X 1 1/4

ECN DATE	ACT	GBC PT. #	VDR PT. #	DESCRIPTION
		1715600	44WAG012	FUSE HOLDER END PLATE, GREY
		1715601	44WAG102	WAGO QUICK MARKING LABELS 1 THRU 10
		1715602	45AMP000	LIVE SPLIT PIN PHOSPHOR BRONZE, TIN FINISH 0.050-0.115ID
		1715603	45AMP001	STANDARD SOCKET PHOSPHOR BRONZE, TIN FINISH 0.050-0.115ID
		1715604	45AMP002	RECTANGULAR CONNECTOR PIN HOUSING 94V-0 NYLON, BRICK RED 2-CIRCUIT
		1715605	45AMP032	RECTANGULAR CONNECTOR SOCKET HOUSING 45AMP032 2-CIRCUIT
		1715606	45MLX101	FEMALE QUICK CONNECT, INSULATED INSULATED 22-18 AWG, 0.250 X 0.032
		1715607	45MLX103	FEMALE QUICK CONNECT, INSULATED INSULATED 22-18 AWG, 0.187 X 0.020
		1715608	45MLX106	FEMALE QUICK CONNECT INSULATED 14-16 AWG 0.250 X 0.032
		1715609	45MLX107	FEMALE QUICK CONNECT INSULATED 14-16 AWG 0.187 X 0.020
		1715610	45MLX201	RING TERMINAL, INTERNAL LOCK 16-18 GA FOR #10 SCREW
		1715611	45WIF003	FEMALE CONNECTOR W/FIXING FLANGES, GREY THERMOPLASTIC 5MM PITCH, 3 POLE
		1715612	45WIM003	MALE CONNECTOR W/FIXING FLANGES, GREY THERMOPLASTIC 5MM PITCH X 3 POLE
		1715613	4CMS0051	CAPACITOR 5MFD, 370V
		1715614	4CZ00000	CAPACITOR MOUNTING KIT
		1715615	4F360100	SLOW BLOW FUSE 1 AMP, GLASS BODY 250V, 1/4 X 1-1/4 (3AG)
		1715616	4F360800	SLOW BLOW FUSE 8 AMP, GLASS BODY 250V, 1/4 X 1-1/4 (3AG)
		1715617	4F361500	SLOW BLOW FUSE, 15 AMP, GLASS BODY, 250V, 1/4 X 1-1/4 (3AG)
		1715618	4FZPM001	SLOTTED PANEL FUSE HOLDER BLACK 1/4 X 1 1/4 (3AG)
		1715619	4H100009	TIMING RELAY
		1715620	4H100010	RELAY, SOCKET MOUNT, 4PDT, 24VDC COIL, 5A CONTACTS
		1715621	4H100011	RELAY, SOCKET MOUNT, DPDT, 24VDC COIL, 5A CONTACTS
		1715622	4H200008	RELAY SOCKET
		1715623	4H200009	RELAY SOCKET, BLADE TYPE, DPDT
		1715624	4H300002	HOLD DOWN CLIP FOR GT5Y TIMING RELAY
		1715625	4JMBT006	MINIATURE ROCKER SWITCH
		1715626	4KVX10A3	MECH. ACTUATED SOLID STATE SWITCH N.O., 2.34 BATT 0.10 OUNCES
		1715627	4LDRO005	TUBULAR PHOTOELECTRIC SENSOR
		1715628	4LRFA002	CORNER CUBE TAPE, ADHESIVE BACKED REFLECTIVITY FACTOR: 0.7 1 WIDE
		1715629	4PPWO012	DC POWER SUPPLY, 1.2 AMPS
		1715630	4RMCM002	24V INCANDESCENT LAMP
		1715631	4RMCM0H2	COMPACT, INDICATING LAMP HOLDER
		1715632	4TGSB016	AC GEARMOTOR WITH BRAKE, PSC START, 160 PRM
		1715633	4TGSB017	AC GEARMOTOR WITH BRAKE, 230 V, 50/60 HZ
		1715634	4XPSB001	PASSIVE STATIC BRUSH
		1715635	60TH5822	FLANGED PLAIN BEARING NYLON 0.5010 ID X 0.5620 HOUSING BORE 7/32L
		1715636	60TS7892	SNAP IN SLEEVE BEARING NYLON, TEP 642 1/2 ID X 9/16 OD X 0.140 T
		1715637	61R10815	RADIAL BALL BEARING SEALED 1/2ID X 1-1/8OD X 5/16W

ECN DATE	ACT	GBC PT. #	VDR PT. #	DESCRIPTION
		1715638	61RMO001	RADIAL BALL BEARING 10MM ID X 19MM OD X 5MM WIDE
		1715639	6CR251CL	ROLLER CHAIN CONNECTING LINK #25
		1715640	6DSD4037	IDLER PULLEY, DELRIN, 1/4 B, 1/8 RD
		1715641	6E25B094	ROLLER CHAIN SPROCKET, PLASTIC, #25, 9T, 1/4B
		1715642	6JR81200	ROLLER CLUTCH 1/2 SHAFT
		1715643	AP383000	SOCKET HEAD CAP SCREW WITH KNOB ASSEMBLY
		1715644	LM030000	SEPARATOR MOUNT BLOCK
		1715645	LM031000	SEPARATOR
		1715646	LM033000	MOTOR MOUNT
		1715647	LM035000	PIVOT SHAFT
		1715648	LM036000	GUIDE SHAFT
		1715649	LM039000	BACK COVER
		1715650	LM040000	IDLER
		1715651	LM041000	STACKER PLATE
		1715652	LM042000	DEFLECTOR
		1715653	LM043000	SIDE FRAME
		1715654	LM044010	SIDE PLATE
		1715655	LM045000	IDLER BLOCK
		1715656	LM046000	PAPER GUIDE
		1715657	LM047000	CONTROL SIDE COVER
		1715658	LM048000	MOTOR SIDE COVER
		1715659	LM049000	STRIPPER BLOCK
		1715660	LM050000	LOWER OUTPUT ROLLER MODIFICATION
		1715661	LM051000	INSIDE PIVOT ARM
		1715662	LM052000	REACTION BLOCK
		1715663	LM053000	OUTSIDE PIVOT ARM
		1715664	LM054000	OUTPUT DRIVEN PULLEY
		1715665	LM055000	BEARING BLOCK
		1715666	LM058000	SEPARATOR DRIVE BELT
		1715667	LM059000	OUTPUT ROLLER DRIVE BELT
		1715668	LM060000	OUTPUT DRIVE PULLEY
		1715669	LM061000	KNOB MODIFICATION
		1715670	LM062000	MODIFIED SHAFT BRACKET
		1715671	LM064000	MODIFIED BRACKET - LEFT
		1715672	LM065000	MODIFIED BRACKET - RIGHT
		1715673	LM067000	STOP MAGNET
		1715674	LM068000	LID BAR
		1715675	LM069000	MODIFIED BEARING BLOCK



ECN DATE	ACT	GBC PT. #	VDR PT. #	DESCRIPTION
		1715676	LM100000	SENSOR BRACKET
		1715677	LM101000	WEIGHT PIVOT SHAFT
		1715678	LM102000	WEIGHT FOOT
		1715679	LM103000	GATE SHEET
		1715680	LM104000	GATE FACE PLATE
		1715681	LM105000	GATE MOUNT BRACKET
		1715682	LM106000	GATE GUIDE BLOCK
		1715683	LM108000	BEARING BLOCK
		1715684	LM109000	WEIGHT BACKER BRACKET
		1715685	LM114000	IDLER BRACKET
		1715686	LM115000	GATE MOUNT BAR
		1715687	LM116000	WEIGHT BLOCK
		1715688	LM119000	LARGE SPROCKET
		1715689	LM120000	FEED ROLLER CHAIN
		1715690	LM130000	LEFT INFEED BRACKET
		1715691	LM131000	STUB SHAFT
		1715692	LM132000	SWITCH ACTUATOR
		1715693	LM133000	OUTPUT EXTENSION PLATE
		1715694	LM134000	RIGHT INFEED BRACKET
		1715695	LM140000	RIGHT COVER MOD
		1715696	LM141000	LEFT COVER MOD
		1715697	LM143000	FEED KNOB
		1715698	LM144000	MODIFIED BRACKET
		1715699	LM145000	LOWER PIVOTING COVER
		1715700	LM200000	MODIFIED EAGLE 35 MAIN FRAME
		1715701	LM200010	MODIFIED EAGLE 35 MAIN FRAME, 230V
		1715702	LM201000	CRATE
		1715703	LM225000	LEFT GUIDE RAIL
		1715704	LM226000	RIGHT GUIDE RAIL
		1715705	LM227000	FEEDER DECK
		1715706	LM228000	FEED SHAFT
		1715707	LM229000	MODIFIED INPUT COVER
		1715708	LM230000	WEIGHT MOUNT BRACKET
		1715709	LM231000	MODIFIED SMALL COVER
		1715710	LM232000	INFEED EXTENSION BRACKET
		1715711	LM233000	INFEED BRACKET
		1715712	LM234000	PHOTOEYE BRACKET
		1715713	LM235000	GAS SPRING STANDOFF

03/25/99

ECN DATE	ACT	GBC PT. #	VDR PT. #	DESCRIPTION
		1715714	LM236000	SWITCH ACTUATOR
		1715715	LM237000	COVER
		1715716	LM238000	SEPERATOR DRIVE PULLEY
		1715717	LM240000	FEED ROLLER WITH HUB
		1715718	LM241000	CAPACITOR ASSEMBLY
		1715719	LM250000	EAGLE 35 OPERATOR MANUAL