

Engineer Note

Version A.5

H110



TEX YEAR INDUSTRIES INC.

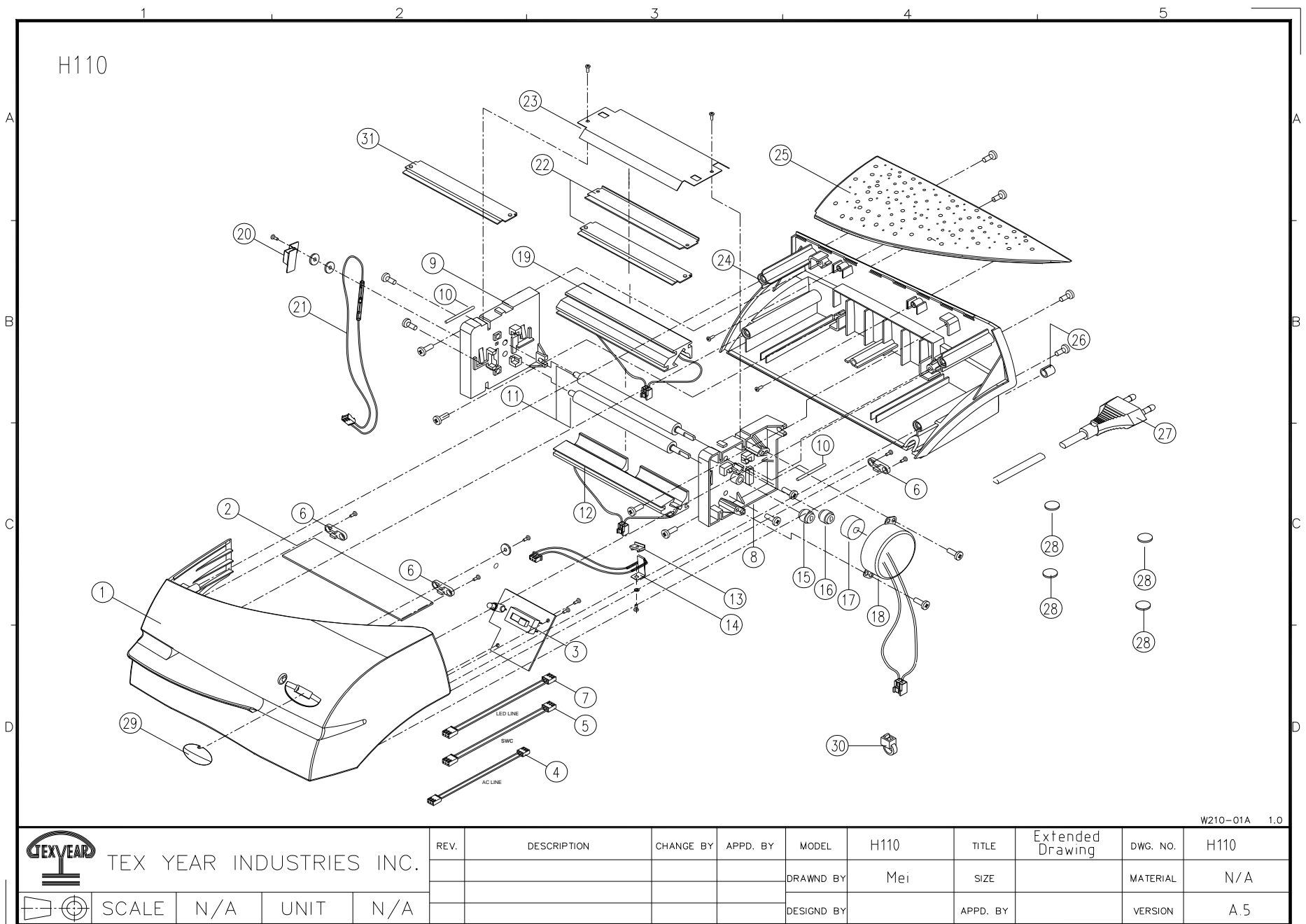
2008/03/04

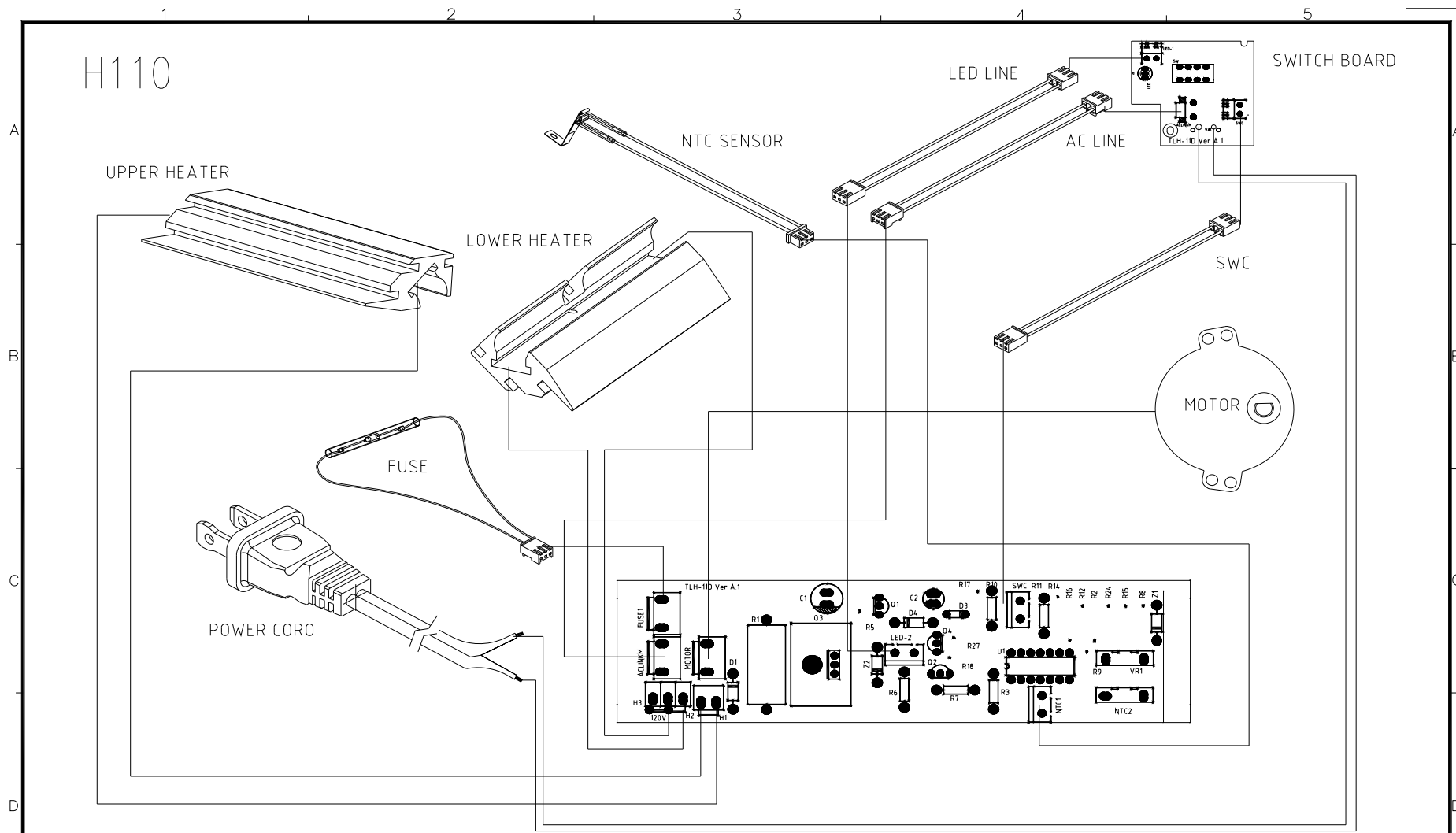
H110

PARTS LIST

2008/03/04
Version A.5

No.	DESCRIPTION	PART NUM.	COST	QTY
1	FRONT HOUSING	24300071C	2.5	1
2	MAIN PCB 120V	2A35031C	3	1
3	CONTROL PCB	2A35030C	1.1	1
4	PCB CONNECTING WIRE(AC LINK)	24700032C	0.1	1
5	PCB CONNECTING WIRE(SWC)	24700033C	0.1	1
6	WIRE RETAINER	26300006	0.02	3
7	PCB CONNECTING WIRE(LED)	24700623C	0.1	1
8	RIGHT SIDE PLATE	24300016C	0.5	1
9	LEFT SIDE PLATE	24300017C	0.5	1
10	ROLLER TENSION SPRING	26500003C	0.1	2
11	ROLLER	24400004C	1.2	2
12	LOWER HEAT PLATEN ASS'Y 120V	2A35034C	2.55	1
13	PAD	26300012C	0.1	1
14	NTC (ROLLER)	24700120C	0.8	1
15	ROLLER GEAR 12T	24700319C	0.1	1
16	ROLLER GEAR 12T	24700329C	0.1	1
17	MOTOR GEAR 21T	24700326C	0.1	1
18	MOTOR 120V	24700014C	2	1
19	UPPER HEAT PLATEN ASS'Y	2A35033C	1.65	1
20	FUSE FIXTURE	24500066C	0.1	2
21	THHERMAL FUSE 120V	24700660C	0.6	1
22	EXIT PLATE	24500084C	0.35	2
23	HEAT SHIELD	24500020C	0.35	1
24	REAR HOUSING	24300014C	2	1
25	TOP VENT COVER	24300015C	0.7	1
26	FIXTURE RING 120V	26400002C	0.1	1
27	POWER CORD,US	24100137C	2.5	1
28	PUBBER FOOT	26400005C	0.01	4
29	FUNCTION SWITCH CAP	26300015C	0.23	1
30	CABLE TIE	26700008C	- -	5
31	Starter Kit(with flysheet)	2A35014C	0.91	1
32	Instruction Manual	26200208C	0.66	1
33	Bubble bag	24200048C	0.04	1
34	Machine Box	24200119C	1.3	1
35	Master Box	24200042C	0.8	0.25
36	Starburst label	26200111C	0.05	1

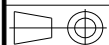




W210-01A 1.0



TEX YEAR INDUSTRIES INC.



SCALE N/A UNIT N/A

REV.	DESCRIPTION	CHANGE BY	APPD. BY	MODEL	H110	TITLE	Electrical Schematic	DWG. NO.	H110
				DRAWND BY	Mei	SIZE		MATERIAL	N/A
				DESIGND BY		APPD. BY		VERSION	A.3