

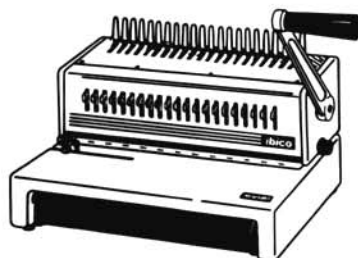
ibico**KOMBO** (27140)

Binding Systems

Fully Adjustable Plastic Comb Binding System

SPECIAL FEATURES:

- Versatile option for binding both standard and odd size documents
- Binds up to 2" or 425 sheets*
- 21 disengageable punching dies; 20 sheets per punch
- Manual punch and manual plastic binding system
- Punch 7,200 sheets per hour; bind 250 books per hour
- For books up to 12" in length
- Open throat construction allows punching of oversized documents
- 4 position depth selector varies distance between the punched hole and the paper's edge from $\frac{1}{8}$ " to $\frac{3}{8}$ " – larger documents require larger margins
- Adjustable side guide for proper paper and cover alignment
- Easy access, front-opening waste and storage drawer
- Progressive cutting dies for precise punching and little paper dust
- Variety of textured covers and colored combs available
- Dimensions: 19 $\frac{1}{2}$ " W x 11 $\frac{3}{4}$ " D x 17" H (with lever)
- Weight: 23.0 lbs.



APPLICATIONS:

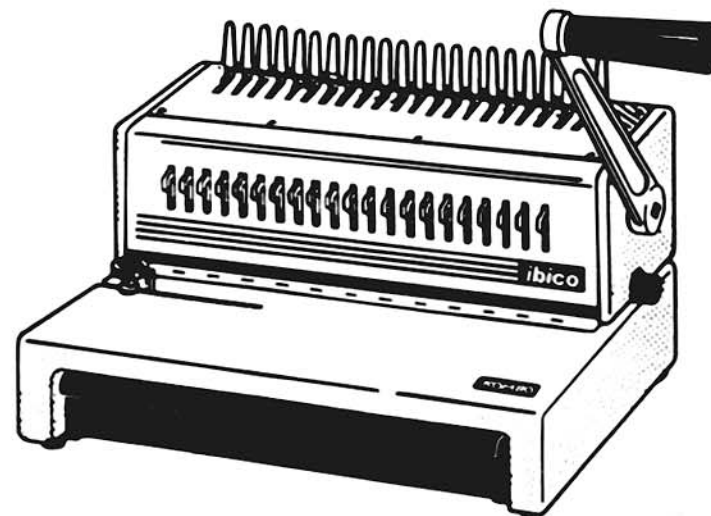
- Client Presentations
- Employee Handbooks
- Pricing Lists
- Business Proposals
- School Reports
- Recipe Books

LIMITED ONE YEAR WARRANTY**RUGGED METAL CONSTRUCTION**

*Standard 20lb. bond paper

ibico

Binding Systems

KOMBO™

For Services & Supplies call:
**Advanced Document
Systems & Supply, Inc.**

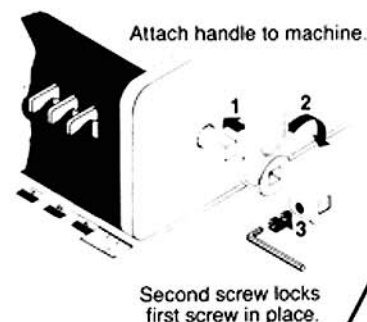
Phone (800) 808-2377
Fax (888) 237-7329

Operation Manual

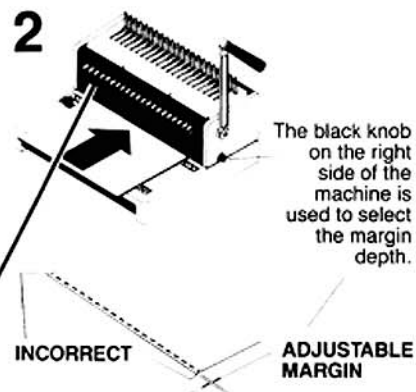
KOMBO: E-Z INSTRUCTIONS

ADJUSTMENTS

- 1** Attaching handle to your machine.



2



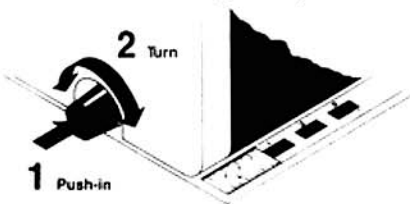
3

For 11" sheets pull out the first and the last set pins (#1 and #21 on the black punch diagram).



4

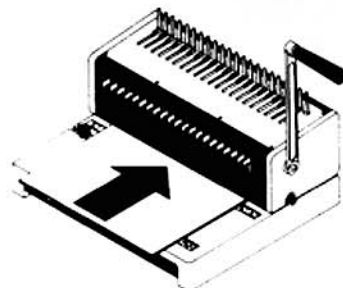
Black knob on the left side of the machine can be set for handle to stop automatically at the same position each time for long binding runs.



PUNCHING

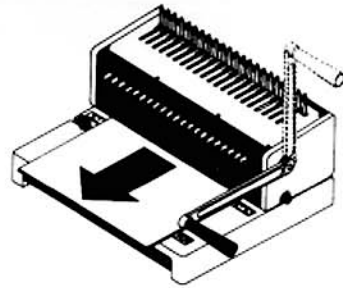
5

Handle upright, put sheets flush into machine. (Use side guide for side adjustment.)



6

Pull the handle down for punching. Return the handle to its upright position to remove the paper.



BINDING

7

Place binding element, open side up, behind metal fingers.



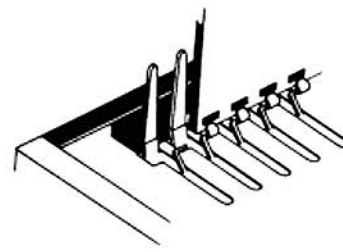
8

Push handle to the rear to open rings.



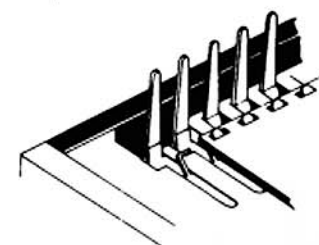
9

Insert paper vertically, cover facing you.



10

Lay paper down horizontally, then put handle back to vertical position.



11

Remove book vertically.

