



# **2000XT**

## **Parts List**



**GBC IS AN ACCO BRANDS COMPANY**

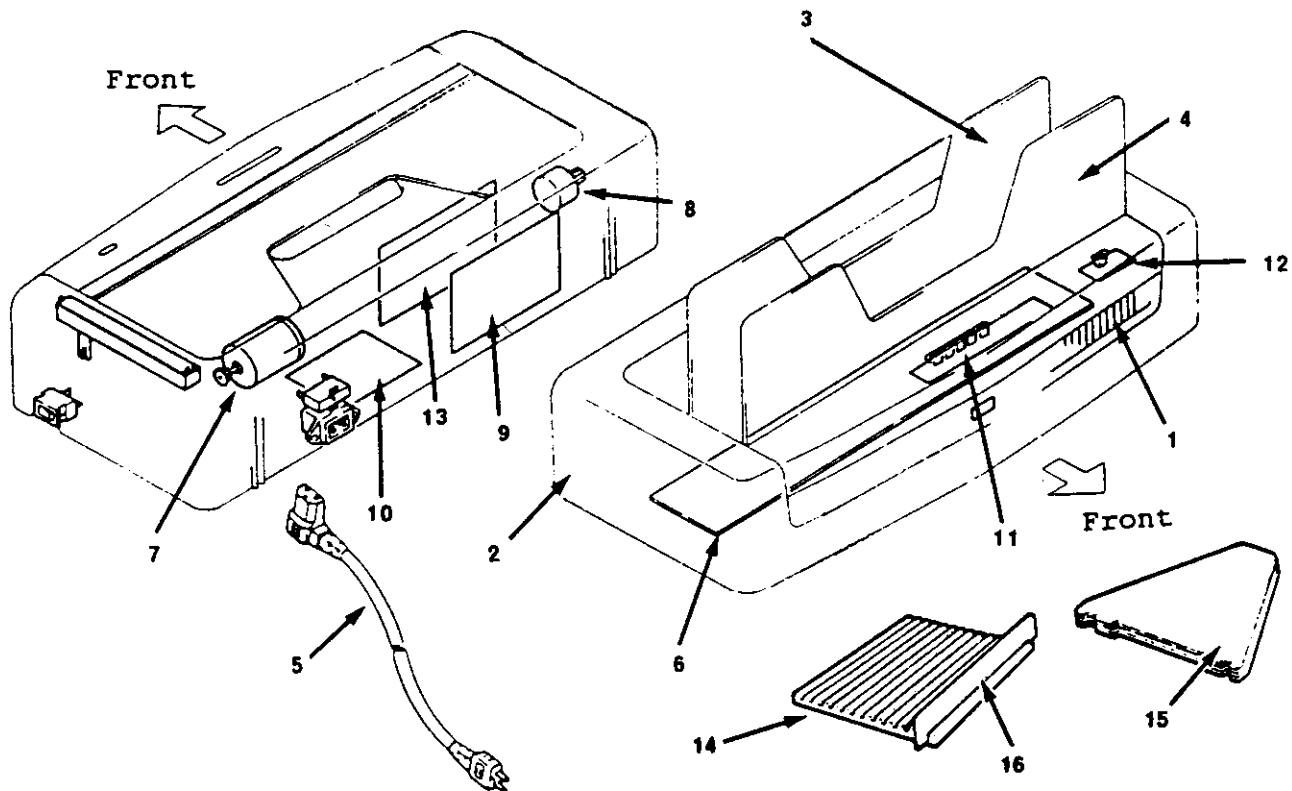


FIGURE 8-1

INDEX NUMBER	PART NUMBER	PART NAME	QUANTITY		
			115V	220V	240V
1	1165600	DISPLAY UNIT . . . . .	1	1	1
2	1165601	COVER. . . . .	1	1	1
3	1165602	PLATE, GUIDE 1 (REAR). . . . .	1	1	1
4	1165603	PLATE, GUIDE 2 (FRONT). . . . .	1	1	1
5	1165604	POWER CORD, 3 PRONG, 115VAC. . . . .	1		
5	1165616	POWER CORD, 3 PRONG, 220VAC. . . . .		1	
5	1165617	POWER CORD, 3 PRONG, 240VAC. . . . .			1
6	1165605	HEATER ASSY (115VAC) . . . . .	1		
6	1165618	HEATER ASSY (220VAC) . . . . .		1	
6	1165619	HEATER ASSY (240VAC) . . . . .			1
7	1165606	GUIDE MOTOR ASSEMBLY . . . . .	1	1	1
8	1165607	JOG MOTOR ASSEMBLY . . . . .	1	1	1
9	1165608	DC CONTROLLER PCB ASSEMBLY . . . . .	1	1	1
10	1165609	AC CONTROLLER PCB ASSEMBLY . . . . .	1		
10	1165620	AC CONTROLLER PCB ASSEMBLY . . . . .		1	1
11	1165610	DISPLAY PANEL PCB ASSEMBLY 1 . . . . .	1	1	1
12	1165611	DISPLAY PANEL PCB ASSEMBLY 2 . . . . .	1	1	1
13	1165612	DC POWER SUPPLY PCB ASSEMBLY . . . . .	1	1	1
13	1165621	DC POWER SUPPLY PCB ASSEMBLY . . . . .		1	1
14	1165613	BASE, COOLING STAND. . . . .	1	1	1
15	1165614	COOLING STAND (SET OF 4) . . . . .	1	1	1
16	1165615	SPATULA. . . . .	1	1	1
*17	1340004	OPERATING INSTRUCTIONS . . . . .	1	1	1

\* NOT SHOWN

* 18	1165652	RECEIVER
* 19	1165653	EMITTER
* 20	1165654	CLUTCH ASSEMBLY (TORQUE LIMITER)