

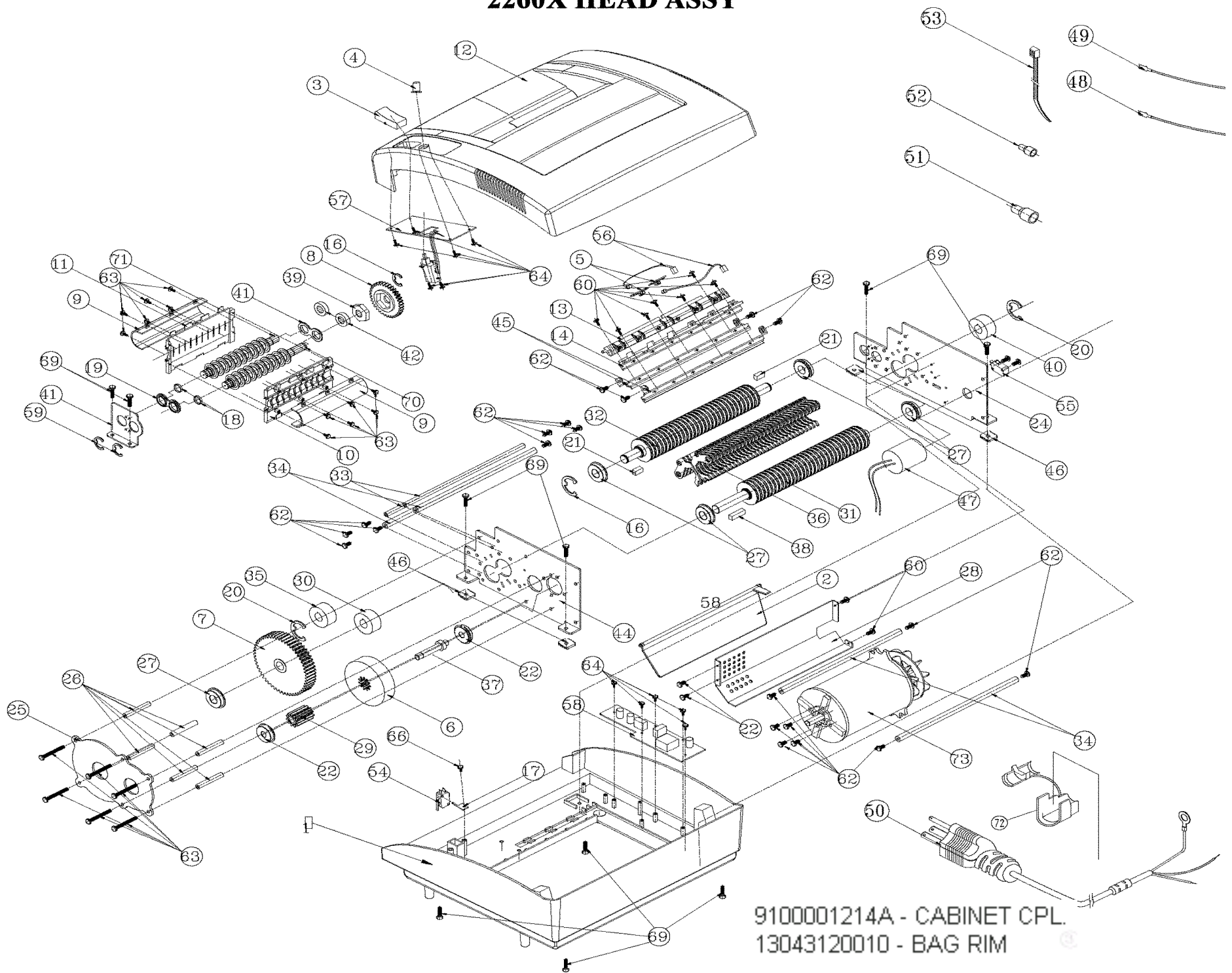


2260X PARTS LIST



GBC IS AN ACCO BRANDS COMPANY

2260X HEAD ASSY



9100001214A - CABINET CPL.
13043120010 - BAG RIM

2260X PARTS LIST

73	66000000190X	AC MOTOR 9450MM 115V	1	
72	690200007300	TUBE PLASTICS Ø4 L=20MM	1	
71	91000012134X	2260X KNIFE B ASS'Y	1	
70	91000012133X	2260X KNIFE A ASS'Y	1	
69	153501657110	P-T/SCREW MM M5 16MM	10	
68	153501017120	P-T/SCREW MM M5 10MM	2	
67	152400627111	C-M/SCREW MM M4 6MM	2	
66	152301239110	C-M/SCREW MM M3 12MM	5	
65	180200007540	2230S-2 RUBBER	4	
64	152300627110	SCREW-C-M/SCREW MM#3 6MM	25	
63	151505707110	SCREW S	6	
62	151501031110	M/SCREW MM M5 10MM	20	
61	151401227110	M/SCREW MM M4 12MM	4	
60	151300621110	M/SCREW MM M3 6MM	17	
59	130432300100	Ø10 C RING	2	
58	91020002903X	GBC 2250X POWER PCB ASS'Y	1	
57	91020002979X	GBC 2260 PCB ASS'Y	1	
56	91000012452X	GBC 2000 AUTO EYE ASS'Y	1	
55	91000011007X	GBC 2250S BIN FULL ASS'Y	1	
54	91000011006X	GBC 2250S SAFETY SW ASS'Y	1	
53	710100006100	CABLE TIE HW-Ø45 L=120mm	7	
52	690300006400	CNT POWER	4	
51	690300005700	CNT POWER	3	
50	640100075000	CABLE POWER 3 PIN US	1	
49	630152000434	LW UL1015 Ø20 240MM	1	
48	630152000433	LW UL1015 Ø20 250MM	1	
47	562406712020	TAB-DIP 40uF 250V	1	
46	18020000754X	2230S-2 RUBBER	4	
45	13046760010X	PAPER HOLDER	2	
44	13043240010X	PLATE B (MOTOR)	1	
43	13043220010X	BUSHING(GEAR F)	1	
42	13043210010X	GEAR E 20T 7.8MM	2	
41	13043200010X	PLATE D(CD) 2MM	1	
40	13043190010X	GEAR D 16T	1	
39	13042610010X	CD BUSHING	2	
38	13042480010X	SLIDING KEY	1	
37	13042470010X	GEAR A SHAFT	1	
36	13042450010X	PAPER GUIDE T=1.6	122	
35	13042430010X	GEAR C 19T	1	
34	13042410010X	10MM SUPPORT BOSS	6	
33	13042400010X	8MM SUPPORT BOSS	2	
32	13042390010X	4*35 KNIFE B	1	
31	13042380010X	4*35 KNIFE A	1	
30	13042350010X	GEAR-B-1 19T	1	
29	13042340010X	GEAR-A-1 11T	1	
28	13042310010X	MOTOR SHIELD	1	
27	13042300010X	6002 BEARING	5	
26	13042290010X	SUPPER-BOSS	6	
25	13042280010X	PLATE C	1	
24	13042260010X	PLATE A	1	
23	13038320010X	SPRING	1	
22	13038130010X	BEARING 6200	2	
21	13038110010X	SLIDING KEY B	2	
20	13016500010X	#15 C-RING H-CARBON STEEL	2	
19	13015510010X	BUSHING(A)	2	
18	13014700010X	BUSHING(B)	2	
17	13007310010X	SWITCH FIXER	1	
16	130026500100	#9 E-RING H-CARBON STEEL	1	
15	10085130010X	PLASTIC PAPER HOLDER	16	
14	10084700010X	PAPER-HOLDER-RIG	1	
13	10084690010X	PAPER-HOLD-LEFT	1	
12	10081180010X	TOP COVER	1	
11	10081170010X	PAPER GUIDE B(CD)	1	
10	10081160010X	PAPER GUIDE A(CD)	1	
09	10081150010X	KNIFE COVER(CD)	2	
08	10081140010X	GEAR F	1	
07	10080720010X	GEAR B	1	
06	10080711010X	GEAR-A-1	1	
05	10080660010X	LED HOLDER	2	
04	10071200020X	FORWARD KNOB	1	
03	10006170010X	SWITCH CAP	1	
02	10006070010X	FLAP	1	
01	10006032011X	HUSING BOTTOM	1	
ITEM	PART NO.	DESCRIPTION	Q'TY	REMARK