



# **3120LM Parts List**



**GBC IS AN ACCO BRANDS COMPANY**

FIGURE 8.4

PARTS LIST 3120

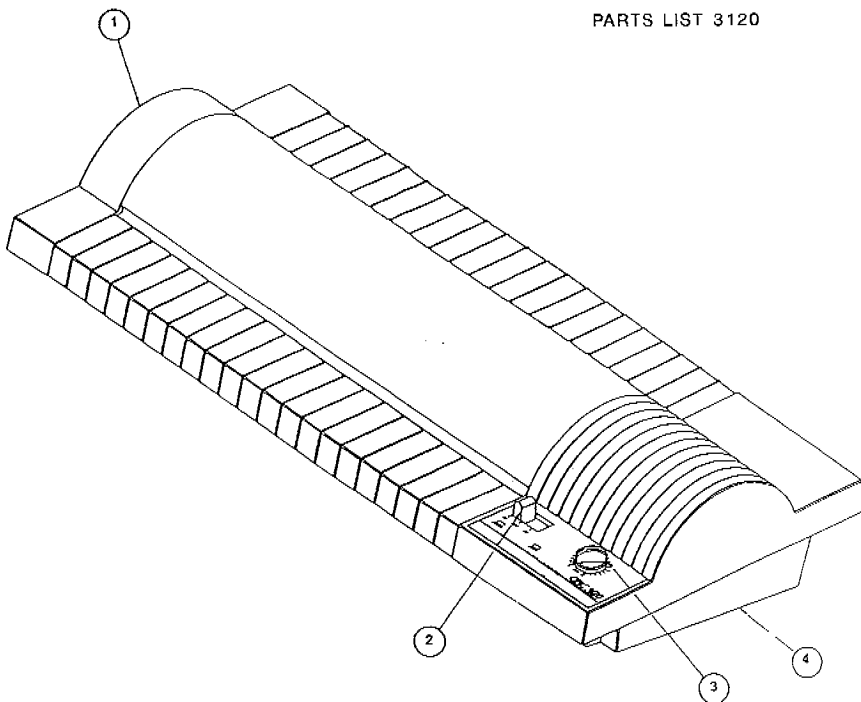


FIGURE 8.4

ITEM	PART NO.	DESCRIPTION	QUANTITY		PER MODEL	
			115	230	VOLT	VOLT
1	7050231	Cover Assembly, Document .....	1	1		
2	7000230	Actuator, Switch, Green .....	1	1		
3	6174000	Knob, Control, Green .....	1	1		
	7050230	Housing, Lower (Document) .....	1	1		

FIGURE 8.3

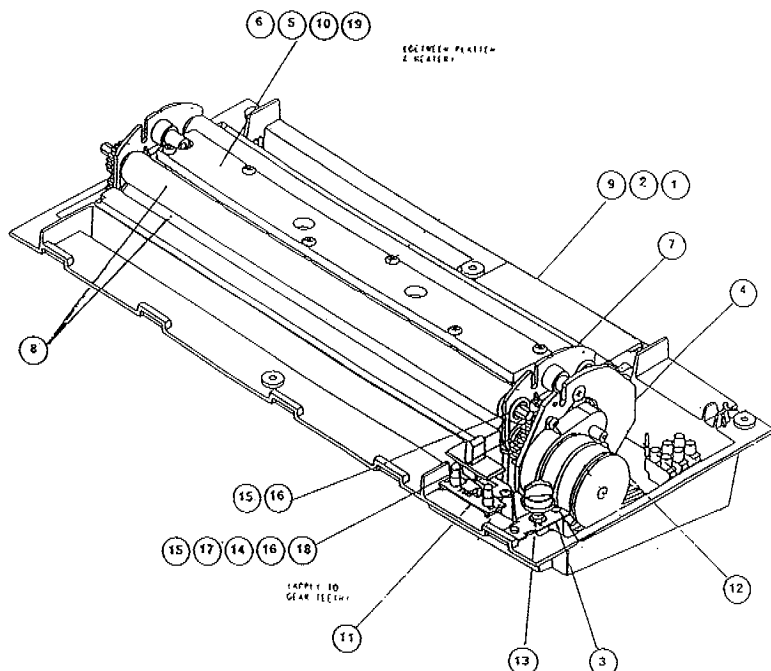


FIGURE 8.3

ITEM	PART NO.	DESCRIPTION	QUANTITY PER MODEL	
			115 VOLT	230 VOLT
1	7050255	Insulator, P.C. Board .....	1	1
2	7050254	Guard, P.C. Board .....	1	1
3	7050252	Bracket, Mounting, Pot. ....	1	1
4	7050251	Plate, Motor Adapter .....	1	1
5	7050250	Platten, Document .....	1	1
6	7050249	Plate, Weight, 3120 .....	1	1
7	7050248	Bearing Plate, Upgrade .....	2	2
8	7050247	Roller Assembly, 3120 .....	4	4
9	7050215	P.C. Board, Control, 115V .....	1	1
	7050515	P.C. Board Control 230/240V .....	1	1
10	7000238	Heater, Trimmed .....	3	3
11	7000214	P.C. Board, Indicator Light .....	1	1
12	6208026	Motor, 240V .....	1	1
	6208024	Motor, 115V .....	1	1
13	6198002	Potentiometer, Control .....	1	1
14	6180002	Gear, Roller, 3120 .....	2	2
15	6170001	Washer, Double-D .....	4	4
16	1932509	Washer, Push-Lok .....	4	4
17	1925203	Washer, Plastic .....	2	2
18	1961525	Grease, Hi-Temperature .....		
19	1954801	Thermal Compound .....		

FIGURE 8.2

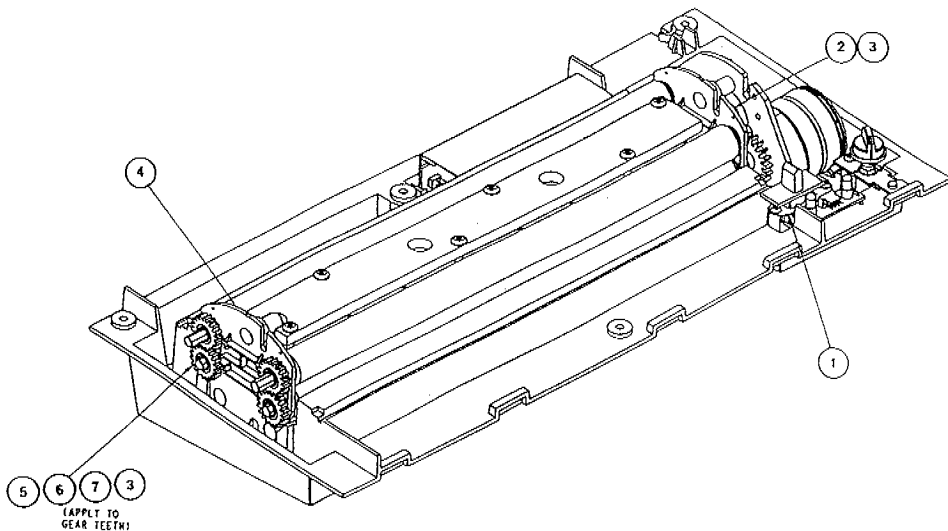
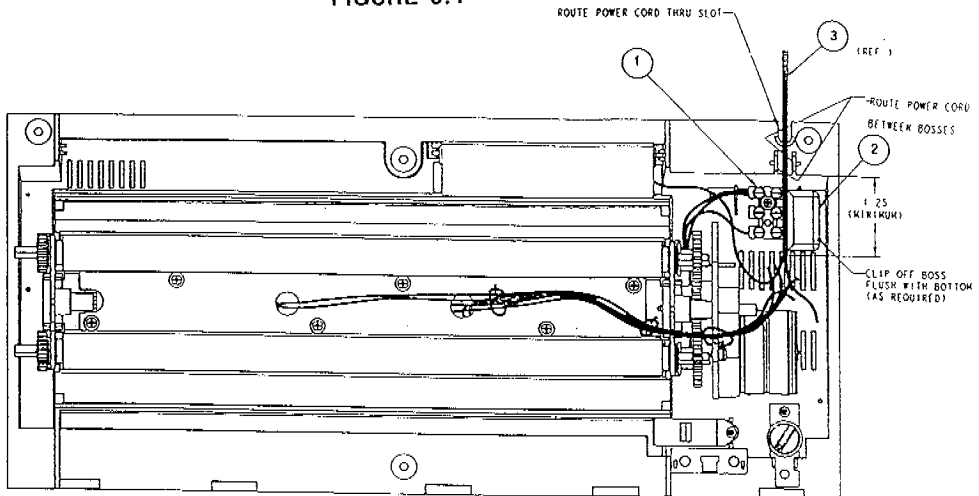


FIGURE 8.2

ITEM	PART NO.	DESCRIPTION	QUANTITY PER MODEL	
			115 VOLT	230 VOLT
1	6202005	Switch, Slide .....	1	1
2	6180033	Gear, Motor, 3120 .....	1	1
3	1932509	Washer, Push-lok .....	5	5
4	7050248	Bearing Plate, Upgrade .....	2	2
5	6170001	Washer, Double-D .....	2	4
6	6180003	Gear, Small (Upgrade) .....	4	4
7	1961525	Grease, Hi-Temperature .....		

FIGURE 8.1

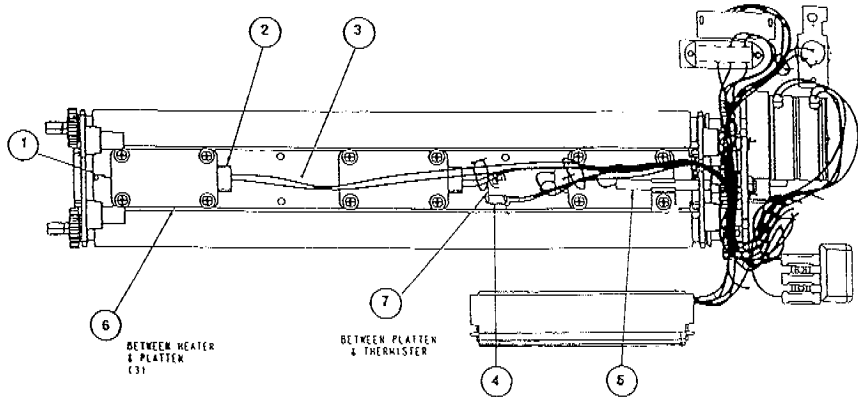


TOP VIEW  
WITH UPPER HOUSING REMOVED  
AND INCOMPLETE WIRING SHOWN

FIGURE 8.1

ITEM	PART NO.	DESCRIPTION	QUANTITY PER MODEL	
			115 VOLT	230 VOLT
1	6196012	Terminal Block, 3 Pin .....	1	1
2	1818003	Capacitor, 115V .....	1	
	1818002	Capacitor, 230V .....		1
3	REF	Power Cord .....	1	1

FIGURE 8.0



**BOTTOM VIEW**  
WITH UPPER & LOWER HOUSINGS REMOVED  
AND INCOMPLETE WIRING SHOWN

FIGURE 8.0

ITEM	PART NO.	DESCRIPTION	QUANTITY PER MODEL	
			115	230
			VOLT	VOLT
1	7000041	PLATE, HEATER RETAINING .....	3	3
2	7000238	HEATER, TRIMMED .....	3	3
3	7050250	PLATTEN, DOCUMENT .....	1	1
4	6199003	SENSOR, TEMPERATURE .....	1	1
5	1818611	THERMAL CUT-OFF .....	1	1
6	1954801	THERMAL COMPOUND .....	1	1