



PS517 & 525 PARTS LIST



GBC IS AN ACCO BRANDS COMPANY

COIL BINDER TOOLING CHART

MACHINE MODELS PS517 PS525

BOOK THICKNESS MM INCH		PITCH	COIL O.D MM	WIRE DIA.	PUNCHING TOOL NUMBER	COILING TOOL NUMBER	KNIFE ASSY. (2 REQ.)	BOOK PLACING FINGER	HOOK	COMBS		F R
										PS517	PS525	
3	1/8	.200 (5:1)	6.5	.028	0312011300	0230065500	0290012800	0237017000	5	0240529000 0240529100	0240329000 0240329100	F R
4	5/32		8	.031		0230085000				0240106100 0240106000	0240306100 0240306000	F R
6	1/4		10			0230105000						
8	5/16		12			0230125000						
10	13/32	.250 (4:1)	14	.037	0312020700	0230144000	0290012900		A 0237006300 B 0237007300	0240106300 0240106200	0240306300 0240306200	F R
12	15/32		16			0230164000						
14	9/16		18			0230184000						
16	5/8		20			0230204000						
18	11/16	.312 (3.2:1)	22.5	.047	0312180100	0230225300	0290028300		C 0237011300 D 0237012300 E 0237014300	0240106900 0240106800	0240306900 0240306800	F R
19	3/4		25			0230253100						
21	7/8		27.5			0230275300						
25	1		30			0230303100						
27	1-1/16		33			0230333100						
29	1-1/8		35			0230353100						

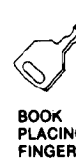
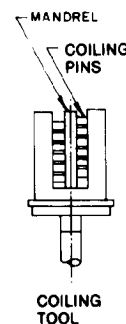
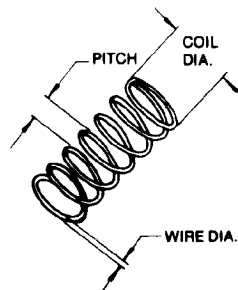
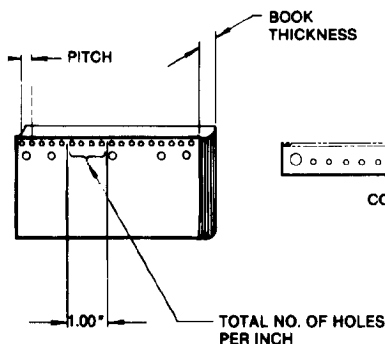
1 IT MAY BE NECESSARY TO USE ONE COIL DIAMETER LARGER THAN INDICATED, DEPENDING ON MATERIAL QUALITY.

2 A NEW COLLAR IS REQUIRED TO HOLD IN TOOLING. ORDER #0010042200 COLLAR ASSEMBLY FOR COILING TOOLS OVER 30mm.

3 EXTRA LARGE TUCK KNIVES AVAILABLE. ORDER #0290050900 FOR 22½mm COILS AND UP.

4 REQUIRES OPTIONAL MOTOR PULLEY #0010021300 FOR SLOWER COIL SPEED.

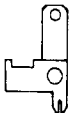
5 THIS SIZE REQUIRES A #0237003000 BOOKSTOP, INSTEAD OF A HOOK.



BOOK PLACING FINGER



COIL HOLE HOOK



KNIFE ASSEMBLY

THIS DATA IS SUBJECT TO CHANGE WITHOUT NOTICE AND IS TO BE USED AS A GUIDELINE ONLY

PARTS LIST

PS525 Coil Binder

Figure 12

The following is a list of parts which are used exclusively on the **PS525** Coil Binder:

1	0030001100	Frame
5	0030001200	Spiral Shaft
11	0030001300	Control Shaft
21	0030001500	Knife Shaft
42	0030001800	Front Comb Mount Shaft
43	0030001900	Comb Support Cross Bar
66	0030002100	Formica Shelf Cross Bar
73	0030001600	Tie Bar
96	0030003400	Brake and Switch Cable Assembly
165	0480031600	Formica Shelf
166	0480041100	Fiberglass Hood
167	0480052500	Hood Guard
168	0480052100	Back Panel
170	0480082000	Jog Table
193	0030001700	Front Comb Mount

Figure 12

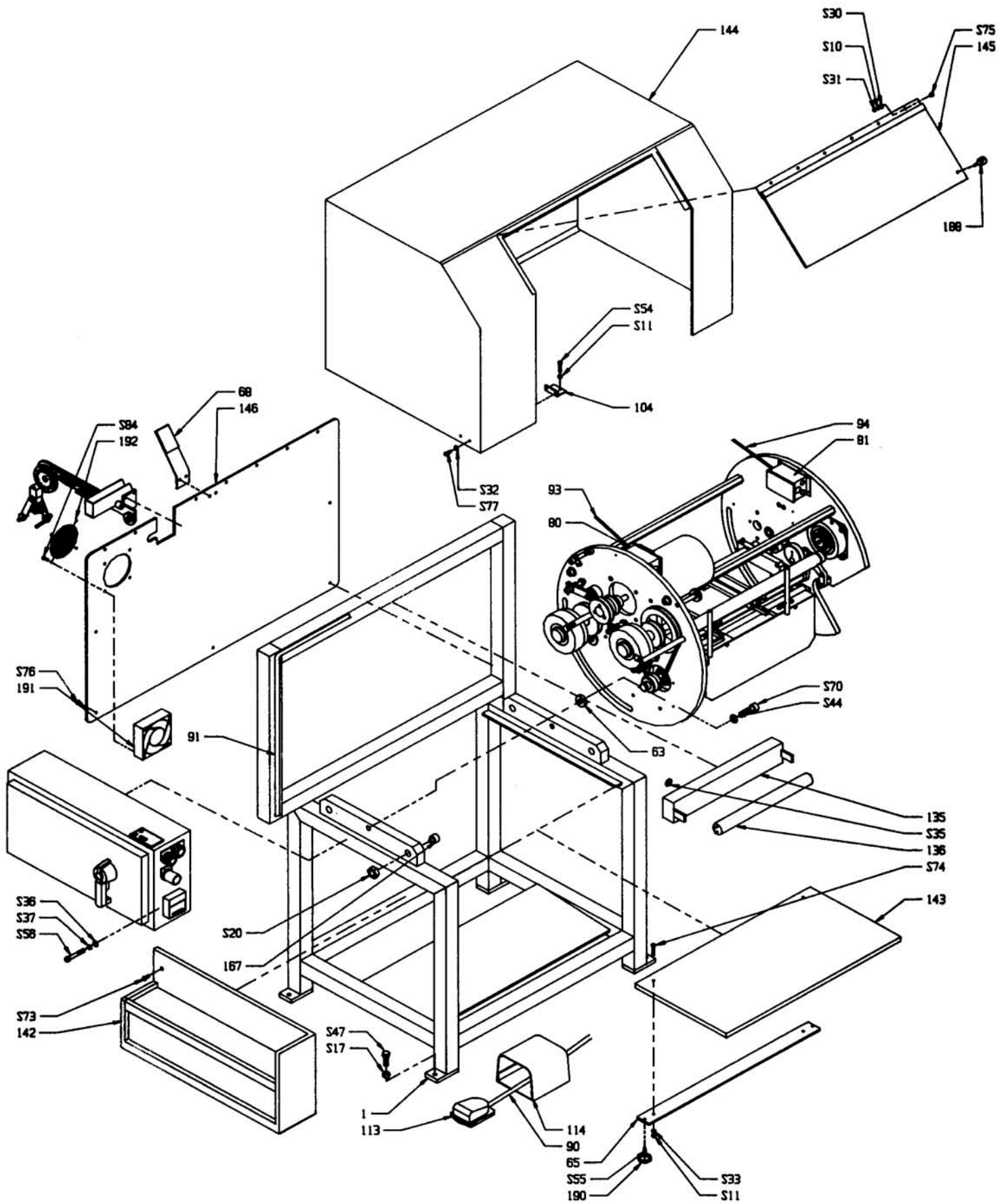


Figure 12

PARTS LIST

ITEM NO.	SICKINGER PART NO.	DESCRIPTION	QUANTITY REQUIRED
1	0010000100	Frame	1
68	0010015100	Back Stop	1
80	0010021500	Junction Box - Mod.	1
81	0010021600	Junction Box - Mod.	1
90	0010026900	Foot Switch Cable	1
91	0010027200	Fan Feed Light	1
93	0010028300	Left Side Drum Cord	1
94	0010028400	Brake and Switch Cable	1
104	0010043200	Hood Safety Switch Bracket	1
113	0220015000	Foot Switch	1
114	0220015500	Guard	1
135	0220165000	Light Fixture	1
136	0220166500	Light Tube	1
137	0220171500	Sta-Kon Terminal (not shown)	10
138	0220196000	Nipple Conduit (not shown)	5
142	0480030100	Tool Cabinet	1
143	0480030600	Formica Shelf	1
144	0480040100	Fiberglass Hood	1
145	0480050000	Hood Guard	1
146	0480050500	Back Panel	1
167	0485080000	Camfollower	2
188	0750086000	Handle	1
190	0750090000	Rosetta Knob	2
191	0750090300	Fan	1
192	0750090400	Fan Guard	1
193	0750090500	Fan Cord (not shown)	1

Figure 12

STANDARD PARTS LIST

S10	0750301500	Hex Nut - 10-24	4
S11	0750304000	Hex Nut - 1/4-20	3
S17	0750314000	Hex Jam Nut - 1/2 -13	4
S20	0750323000	Hex Nut - 7/8-14	2
S30	0750405500	Flat Washer #10	4
S31	0750406000	Lock Washer #10	4
S32	0750409000	Flat Washer - 1/4	2
S33	0750410500	Lock Washer - 1/4	2
S35	0750411500	Flat Fender Washer - 1/4 x 1-1/2	2
S36	0750412000	Flat Washer - 5/16	4
S37	0750413000	Lock Washer - 5/16	4
S44	0750424000	Flat Washer - 5/8	2
S47	0750554000	HHCS - 1/2-13 x 1-1/2	4
S54	0750722500	SHCS - 1/4-20 x 1-1/4	1
S56	0750728000	SHCS - 3/8-16 x 1/2	4
S70	0750754000	SHCS - 5/8-11 x 2	2
S73	0750864500	FHCS - 1/4-20 x 3/4	3
S74	0750866000	FHCS - 1/4-20 x 1-1/2	2
S75	0750935000	BHCS - 1/4-20 x 3/8	4
S76	0750941000	BHCS - 1/4-20 x 1/2	20
S77	0750942000	BHCS - 1/4-20 x 3/4	2
S84	0753395000	Philips Pan Head Screw - 10-24 x 3/4	4

Figure 13

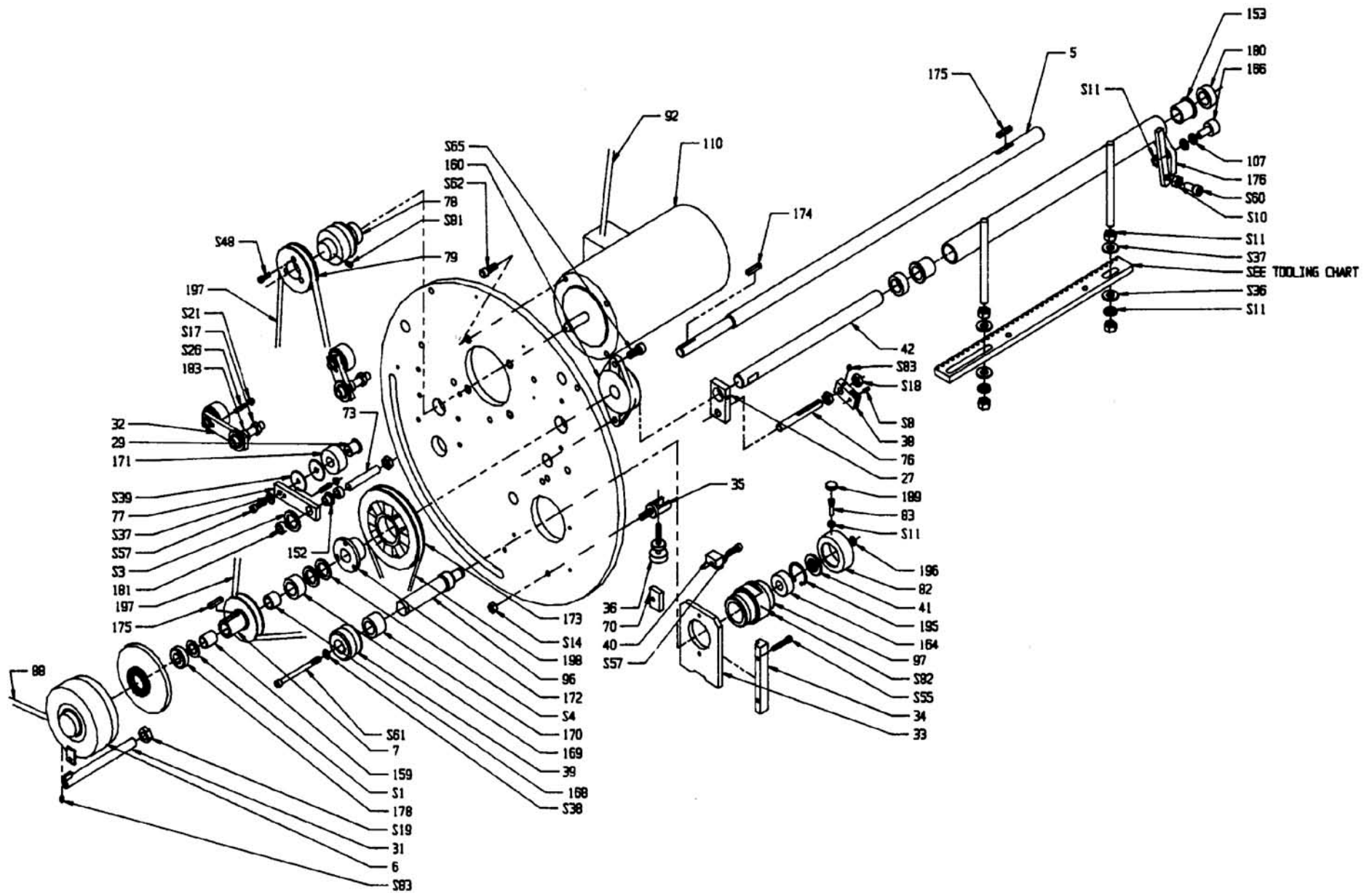


Figure 13 PARTS LIST

ITEM NO.	SICKINGER PART NO.	DESCRIPTION	QUANTITY REQUIRED
5	0010000800	Spiral Shaft	1
6	0010000900	Clutch Assembly	1
7	0010001300	Sheave	1
27	0010004700	Comb Shaft Keeper	1
29	0010004900	Bearing Retainer	1
31	0010005100	Dog Clutch	1
32	0010005300	Idler Arm	1
33	0010005500	Coil Body Mounting Plate	1
34	0010005700	Gib Mounting Plate	1
35	0010005800	Gib Mounting Plate Yoke	1
36	0010005900	Thumb Screw	3
38	0010007800	Pitch Guide	1
39	0010008000	Coil Tool Sheave	1
40	0010008600	Coil Body Keeper	1
41	0010008900	Coil Tool Washer	1
42	0010009300	Comb Mount Shaft	1
70	0010017300	Gib	1
73	0010018300	Idler Shaft	3
76	0010020400	Pitch Rod Adjuster	1
77	0010020700	Idler Arm	2
78	0010021000	Motor Hub	1
79	0010021100	Sheave	1
82	0010021900	Coil Tool Nut	1
83	0010024000	Coil Nut Screw	3
88	0010026700	Spiral Shaft Clutch Cable	1
92	0010027300	Motor Feed To Drum	1
96	0010029800	Coiling Tool Shaft	1
97	0010030100	Coiling Tool Housing	1
107	0050018000	Spacer	2
110	0220001500	Motor	1
152	0485014000	Flange Bushing	3
153	0485019000	Flange Bushing	2
159	0485033000	Bunting Bushing	1
160	0485040000	Flange Bearing	1
164	0485061500	Double Sealed Ball Bearing	1
166	0485079000	Camfollower	1
168	0485084000	Inner Race	1
169	0485085500	Ball Bearing	1
170	0485085700	Roller Bearing	1
171	0485091000	Ball Bearing	3
172	0487031300	Bushing	1
173	0487043000	Sheave	1
174	0512150400	Key	1
175	0512150500	Key	2
176	0640009700	Front Comb Mount	1
178	0750002500	Clamp Tite Collar - 3/4 I.D.	1
180	0750004500	Set Collar	2
181	0750005500	Clamp Tite Collar - 1/2 I.D.	6

Figure 13 PARTS LIST (Contd.)

ITEM NO.	SICKINGER PART NO.	DESCRIPTION	QUANTITY REQUIRED
189	0750086200	Knurled Knob	3
195	0750120000	Snap Ring	1
196	0750120500	Snap Ring	1
197	0750150000	V-belt	2
198	0750151000	V-belt	1

Figure 13 STANDARD PARTS LIST

S1	0750194000	Thrust Washer	1
S3	0750195000	Thrust Washer	3
S4	0750197500	Thrust Washer	2
S8	0750257000	Dowel Pin - 3/16 Dia. x 1/2	1
S10	0750301500	Hex Nut - 10-24	1
S11	0750304000	Hex Nut - 1/4-20	7
S14	0750309000	Hex Nut - 3/8-16	1
S17	0750314000	Hex Jam Nut - 1/2-13	3
S18	0750315000	Hex Jam Nut - 1/2-20	18
S21	0750327500	Pal Nut	3
S26	0750369000	Roll Pin - 1/4 Dia. x 1	3
S36	0750412000	Flat Washer - 5/16	2
S37	0750413000	Lock Washer - 5/16	2
S38	0750414000	L9 Washer - 5/16	1
S39	0750414500	Flat Fender Washer - 5/16 x 1-1/2	6
S48	0750706500	SHCS - 6-32 x 3/8	3
S52	0750719000	SHCS - 1/4-20 x 1/2	1
S55	0750723000	SHCS - 1/4-20 x 1-1/2	2
S57	0750729000	SHCS - 5/16-18 x 1	5
S60	0750730500	SHCS - 5/16-18 x 2	1
S61	0750733500	SHCS - 5/16-24 x 4	1
S62	0750735000	SHCS - 3/8-16 x 3/4	4
S65	0750743000	SHCS - 7/16-14 x 1	2
S81	0751028000	Set Screw - 1/4-20 x 1/2	1
S82	0751032000	Set Screw - 8-32 x 1/4	1
S83	0751403500	Set Screw - 1/4-20 x 3/8 (Brass)	1

Figure 14

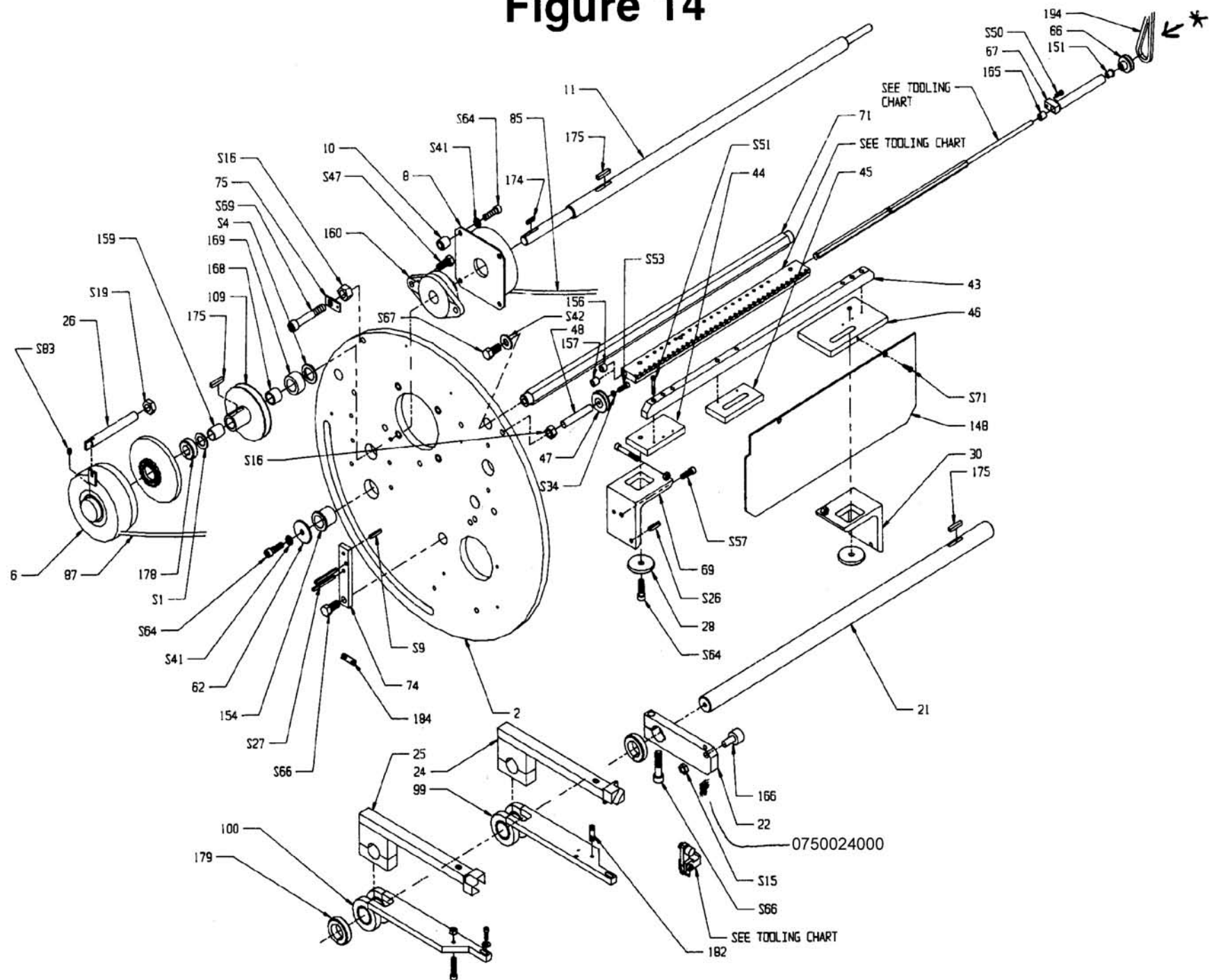


Figure 14 PARTS LIST

ITEM NO.	SICKINGER PART NO.	DESCRIPTION	QUANTITY REQUIRED
2	0010000300	Side Plate, Left Hand	1
6	0010000900	Clutch Assembly	1
8	0010001500	Brake Assembly	1
10	0010001900	Counter Shaft Spacer	1
11	0010002000	Control Shaft	1
21	0010003400	Knife Shaft	1
22	0010003700	Knife Actuator	1
24	0010024300	Knife Actuator - Right Hand (0010044700)	1
25	0010024400	Knife Actuator - Left Hand (0010044800)	1
26	0010004600	Dog Clutch	1
28	0010004800	Rear Comb Washer	2
30	0010005000	Angle Bracket - Right Hand	1
43	0010009500	Comb Support Cross Bar	1
44	0010009600	Left Front Comb Support	1
45	0010009700	Comb Support Plate	1
46	0010009800	Right Front Comb Support	1
47	0010009900	Wire Pulley	3
48	0010010100	Wire Pulley Stud	3
62	0010013400	Knife Shaft Washer	1
66	0010014700	Pulley O-Ring	1
67	0010015000	Spiral Shaft Guide Support	1
69	0010017200	Angle Bracket - Left Hand	1
71	0010017700	Tie Bar	3
74	0010019500	Bracket - Spring	1
75	0010019600	Bracket - Spring	1
85	0010026400	Control Shaft Brake Cable	1
87	0010026600	Control Shaft Clutch Cable	1
99	0010041300	Knife Holder - Right Hand	1
100	0010041400	Knife Holder - Left Hand	1
101	0010031500	Washer	2
102	0010031600	Bushing - Modified	2
109	0050056000	Sheave	1
148	0480080500	Jog Table	1
151	0485019500	Flange Bearing	1
154	0485033000	Bunting Bushing	1
156	0485040000	Flange Bearing	1
157	0485079000	Camfollower	2
159	0485084000	Inner Race	1
160	0485085500	Ball Bearing	1
165	0750002500	Clamp Tite Collar - 3/4 I.D.	1
166	0750003500	Clamp Tite Collar - 1-1/4 I.D.	2
168	0750022500	Spring - Compression	2
169	0750024000	Spring - Compression	1
174	0750025000	Spring - Extension	3
175	0750118000	O-Ring	1
178	0750002500	Clamp Tite Collar - 3/4 I.D.	1
179	0750003500	Clamp Tite Collar - 1-1/4 I.D.	2
182	0750028500	Spring - Compression	2
184	0750025000	Spring - Extension	3
194	0750118000	O-Ring	1

Figure 14 STANDARD PARTS LIST

ITEM NO.	SICKINGER PART NO.	DESCRIPTION	QUANTITY REQUIRED
S1	0750194000	Thrust Washer	1
S5	0750231500	Shoulder Screw - 1/4 Dia. x 1	4
S9	0750260500	Dowel Pin - 1/4 Dia. x 1	2
S13	0750306500	Hex Nut - 5/16-18	2
S15	0750313000	Hex Nut - 7/16-20 Jam	1
S16	0750313500	Hex Nut - 1/2-13	3
S19	0750219000	Hex Nut - 5/8-18 Jam	1
S27	0750371000	Roll Pin - 1/4 Dia. x 2-1/4	2
S28	0750374000	Roll Pin - 5/16 Dia. x 1	2
S32	0750409000	Flat Washer - 1/4	2
S34	0750411000	Lock Washer - Hi Collar - 1/4	3
S41	0750416000	Lock Washer - 3/8	4
S42	0750419500	Flat Washer - 1/2	4
S46	0750544500	HHCS - 7/16-14 x 1	2
S50	0750715000	SHCS - 10-24 x 1	1
S51	0750705500	SHCS - 10-24 x 1-1/4	8
S53	0750720000	SHCS - 1/4-20 x 3/4	3
S57	0750729000	SHCS - 5/16-18 x 1	2
S59	0750730000	SHCS - 5/16-18 x 1-1/2	2
S64	0750736000	SHCS - 3/8-16 x 1-1/4	7
S66	0750746600	SHCS - 1/2-13 x 3/4	1
S68	0750748500	SHCS - 1/2-13 x 2	2
S69	0750749000	SHCS - 1/2-13 x 3	1
S71	0750862000	FHCS - 10-24 x 3/4	2
S72	0750864000	FHCS - 1/4-20 x 1/2	2
S83	0751403500	Set Screw - 1/4-20 x 3/8 (Brass)	1

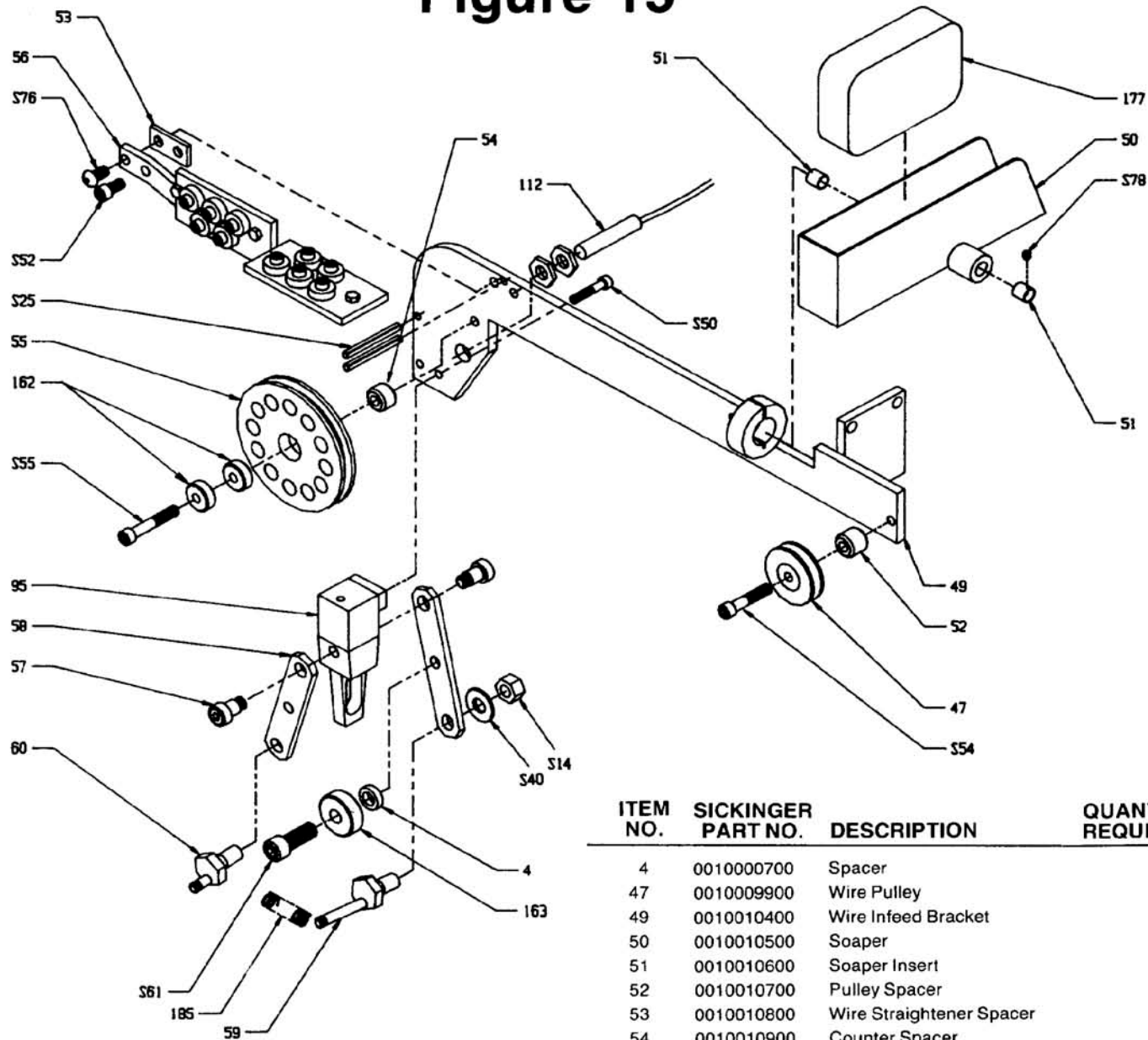
Part Number	Description	Replacement	Price
0010000900	Ass'y Clutch	(Same)	\$558.00
0010004300	Actuator - Knife - R/H	0010024300	*
0010022300	Clamp - Small Book	N/A	\$0.00
0010004200	Knife Holder - R/H	0010041300	*
0010004400	Actuator - Knife - L/H	0010024400	*

* Parts are not interchangeable without ordering both items as an assembly.

Assembly P/N 0010044700 Knife arm assembly R/H will replace items above

Assembly P/N 0010044800 Knife arm assembly L/H will replace item above
(Needs P/N 0010041400 Knife Holder L/H in addition to Actuator)

Figure 15



ITEM NO.	SICKINGER PART NO.	DESCRIPTION	QUANTITY REQUIRED
4	0010000700	Spacer	2
47	0010009900	Wire Pulley	1
49	0010010400	Wire Infeed Bracket	1
50	0010010500	Soaper	1
51	0010010600	Soaper Insert	2
52	0010010700	Pulley Spacer	1
53	0010010800	Wire Straightener Spacer	1
54	0010010900	Counter Spacer	1
55	0010011100	Counter Wheel	1
56	0010011200	Wire Straightener	1
57	0010011400	Shoulder Screw - Modified	2
58	0010011900	Lever	2
59	0010012400	Spring Anchor - Long	1
60	0010012500	Spring Anchor - Short	1
95	0010029700	Anti Twist Body	1
112	0220014000	Proximity Switch	1
162	0485052000	Ball Bearing	2
163	0485057000	Ball Bearing	2
177	0680100000	Lux Soap	1
185	0750026500	Spring - Extension	2
S14	0750309000	Hex Nut - 3/8-16	2
S25	0750368000	Roll Pin - 3/16 Dia. x 1-3/4	2
S40	0750415000	Flat Washer - 3/8	2
S50	0750715000	SHCS - 10-24 x 1	2
S52	0750719000	SHCS - 1/4-20 x 1/2	1
S54	0750722500	SHCS - 1/4-20 x 1-1/4	1
S55	0750723000	SHCS - 1/4-20 x 1-1/2	1
S61	0750735500	SHCS - 3/8-16 x 1	2
S76	0750941000	BHCS - 1/4-20 x 1/2	1
S78	0751013000	Set Screw - 8-32 x 3/16	2

Figure 16

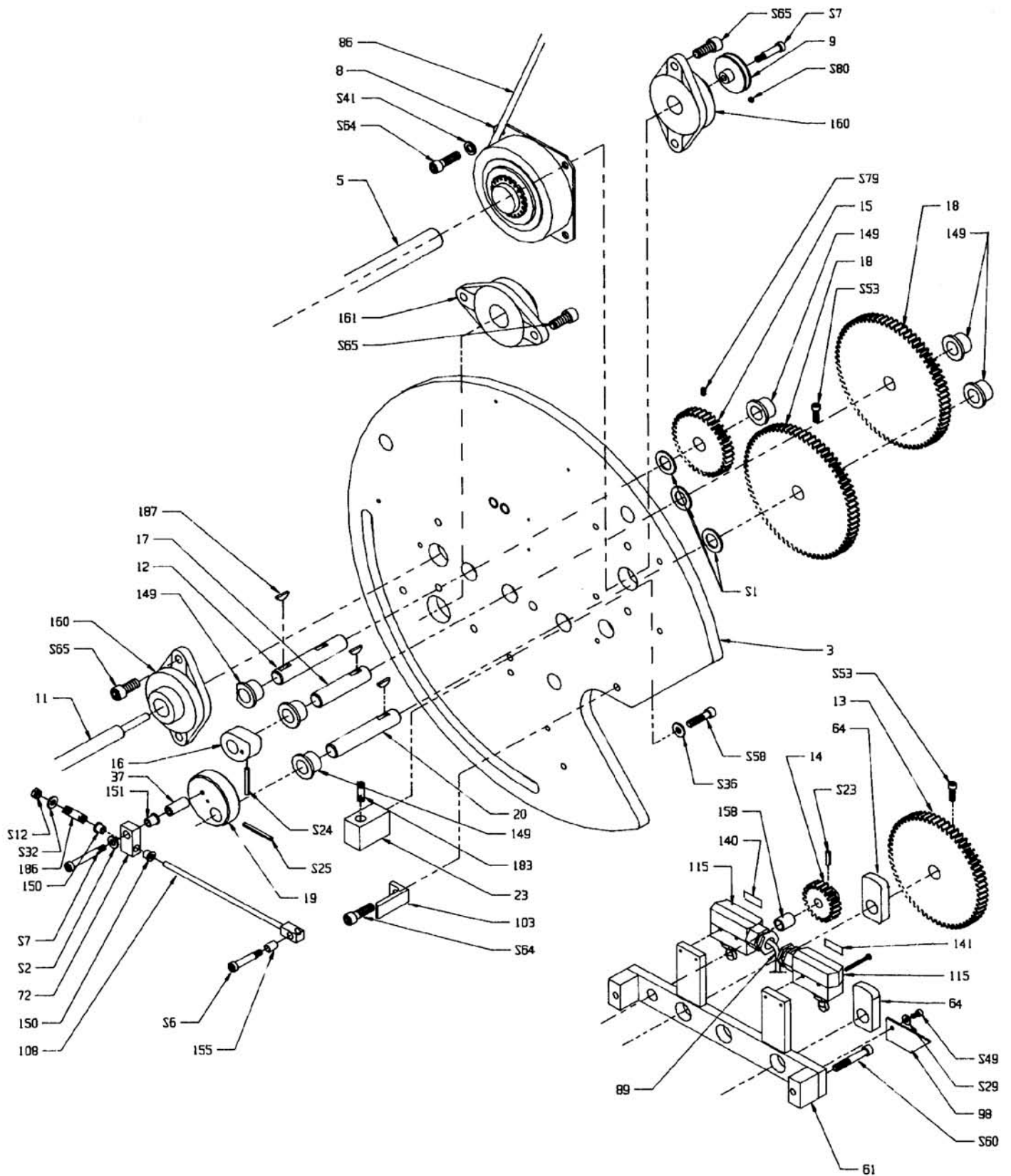


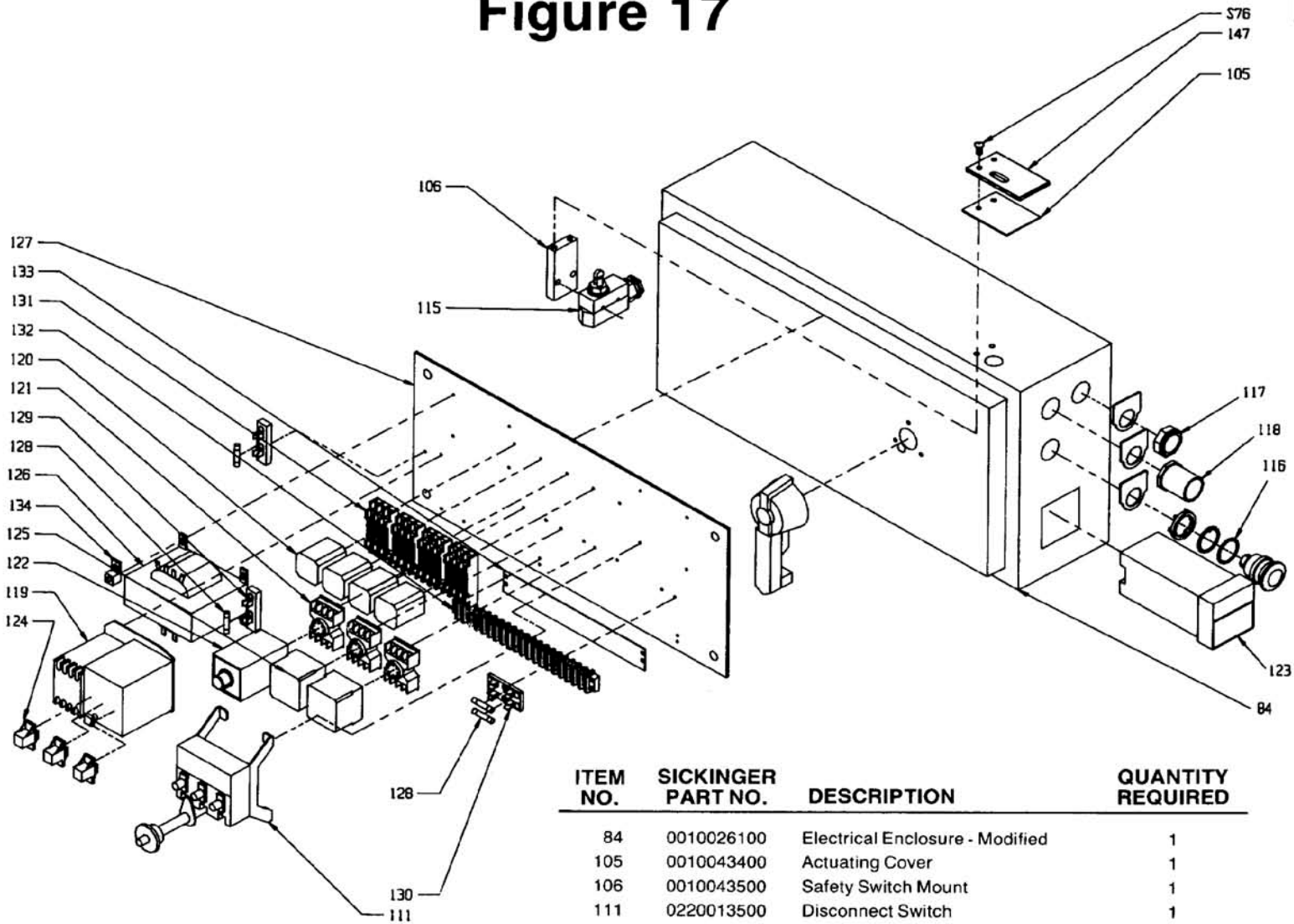
Figure 16 PARTS LIST

ITEM NO.	SICKINGER PART NO.	DESCRIPTION	QUANTITY REQUIRED
3	0010000500	Side Plate - Right Hand	1
5	0010000800	Spiral Shaft	1
8	0010001500	Brake Assembly	1
9	0010001700	Pulley	1
11	0010002000	Control Shaft	1
12	0010002200	Shaft	1
13	0010002300	Spur Gear	1
14	0010002400	Spur Gear	1
15	0010002500	Spur Gear	1
16	0010002900	Knife Cam	1
17	0010003000	Shaft	1
18	0010003100	Spur Gear	2
19	0010003200	Eccentric	1
20	0010003300	Shaft	1
23	0010003800	Support	1
37	0010007400	Spacer	1
61	0010012800	Gear Train Support	1
64	0010013900	Actuator - Right Hand	1
72	0010017800	Pivot Block	1
86	0010026500	Spiral Shaft Brake Cable	1
89	0010026800	Limit Switch Cable	1
98	0010030300	Belt Saver	1
103	0010033100	Comb Stop	1
108	0050055000	Tension Rod	1
115	0220016500	Micro Switch	2
140	0480005500	Cam Tag - (Not shown)	1
141	0480006500	ALS Tag - (Not shown)	1
149	0485007000	Flange Bearing	6
150	0485010000	Flange Bearing	2
151	0485012000	Flange Bearing	1
155	0485024000	Bronze Bushing	1
158	0485031000	Bronze Bushing	1
160	0485040000	Flange Bearing	2
161	0485041000	Flange Bearing	1
183	0750024000	Spring - Compression	1
186	0750050000	Spring - Extension	1
187	0750082500	Woodruff Key	3

Figure 16 STANDARD PARTS LIST

ITEM NO.	SICKINGER PART NO.	DESCRIPTION	QUANTITY REQUIRED
S1	0750194000	Thrust Washer	3
S2	0750194500	Thrust Washer	1
S6	0750235000	Shoulder Screw - 5/16 Dia. x 1-1/4	1
S7	0750236000	Shoulder Screw - 5/16 Dia. x 1-3/4	1
S12	0750304700	Lock Nut - 1/4-20	1
S23	0750365000	Roll Pin - 3/16 Dia. x 3/4	1
S24	0750367000	Roll Pin - 3/16 Dia. x 1-1/4	1
S25	0750368000	Roll Pin - 3/16 Dia. x 1-3/4	1
S29	0750403500	Flat Washer - #8	1
S32	0750409000	Flat Washer - 1/4	1
S36	0750412000	Flat Washer - 5/16	2
S41	0750416000	Lock Washer - 3/8	4
S49	0750713500	SHCS - 10-24 x 3/8	1
S53	0750720000	SHCS - 1/4-20 x 3/4	2
S58	0750729500	SHCS - 5/16-18 x 1-1/4	2
S60	0750730500	SHCS - 5/16-18 x 2	2
S64	0750736000	SHCS - 3/8-16 x 1-1/4	4
S65	0750743000	SHCS - 7/16-14 x 1	6
S79	0751019000	Set Screw - 10-24 x 3/8	1
S80	0751020000	Set Screw - 10-32 x 3/16	1

Figure 17



ITEM NO.	SICKINGER PART NO.	DESCRIPTION	QUANTITY REQUIRED
84	0010026100	Electrical Enclosure - Modified	1
105	0010043400	Actuating Cover	1
106	0010043500	Safety Switch Mount	1
111	0220013500	Disconnect Switch	1
115	0220016500	Micro Switch	1
116	0220032000	Pushbutton	1
117	0220033000	Pushbutton	1
118	0220034000	Pushbutton	1
119	0220040500	Starter	1
120	0220051500	Relay - Square Base	4
121	0220052000	Socket - 8 Pin Octal	3
122	0220052500	Relay - Time Delay	1
123	0220063000	Counter	1
124	0220078000	Heater	3
125	0220080000	Power Supply	2
126	0220090500	Transformer	1
127	0220105000	Subpanel	1
128	0220142500	5 Amp Fuse	3
129	0220150500	Fuse Block	1
130	0220151000	Double Pole Fuse Block	1
131	0220155000	Socket - 11 Pin Square	4
132	0220157000	Terminal Strip	1
133	0220157500	Terminal Back	1
134	0220162000	Ground Lug	1
137	0220171500	Sta-Kon Terminal (Not shown)	30
138	0220196000	Nipple Conduit (Not shown)	2
139	0220215500	Wire Nut (Not shown)	1
147	0480051000	Safety Switch Cover	1
S76	0750941000	BHCS - 1/4-20 x 1/2	2